

# Talos - Standard Samples

Acquire tilesets in MAPs using Talos

Written By: Johannes Riemann



---

## INTRODUCTION

Set up the Thermo Scientific Talos 120 TEM for automated over night acquisition. This guide helps to adjust the microscope to the specific settings needed for data, that is used to train a DNA-fork classifier algorithm.

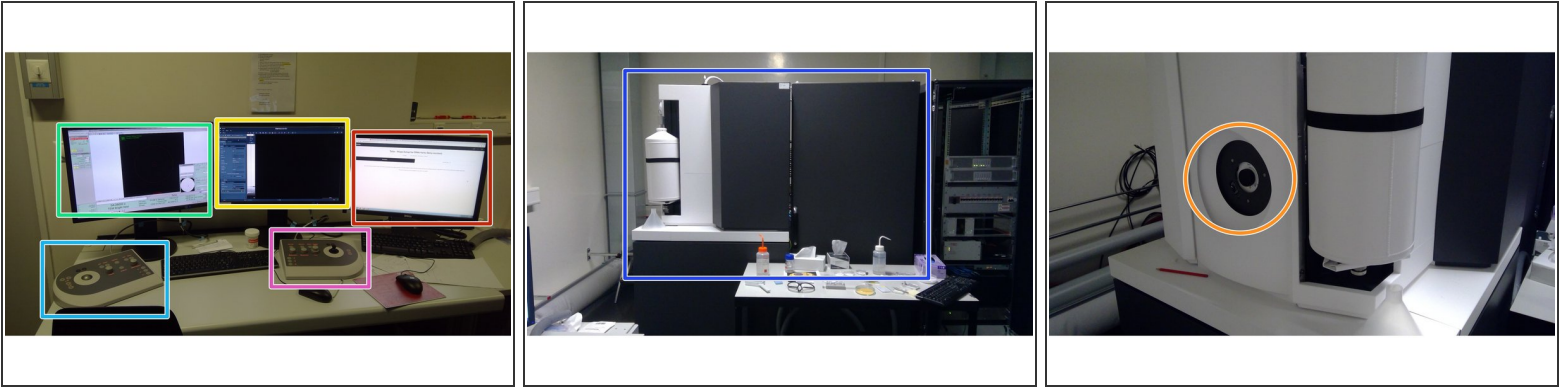
The microscope has to be well aligned to be used in this guide.



### TOOLS:

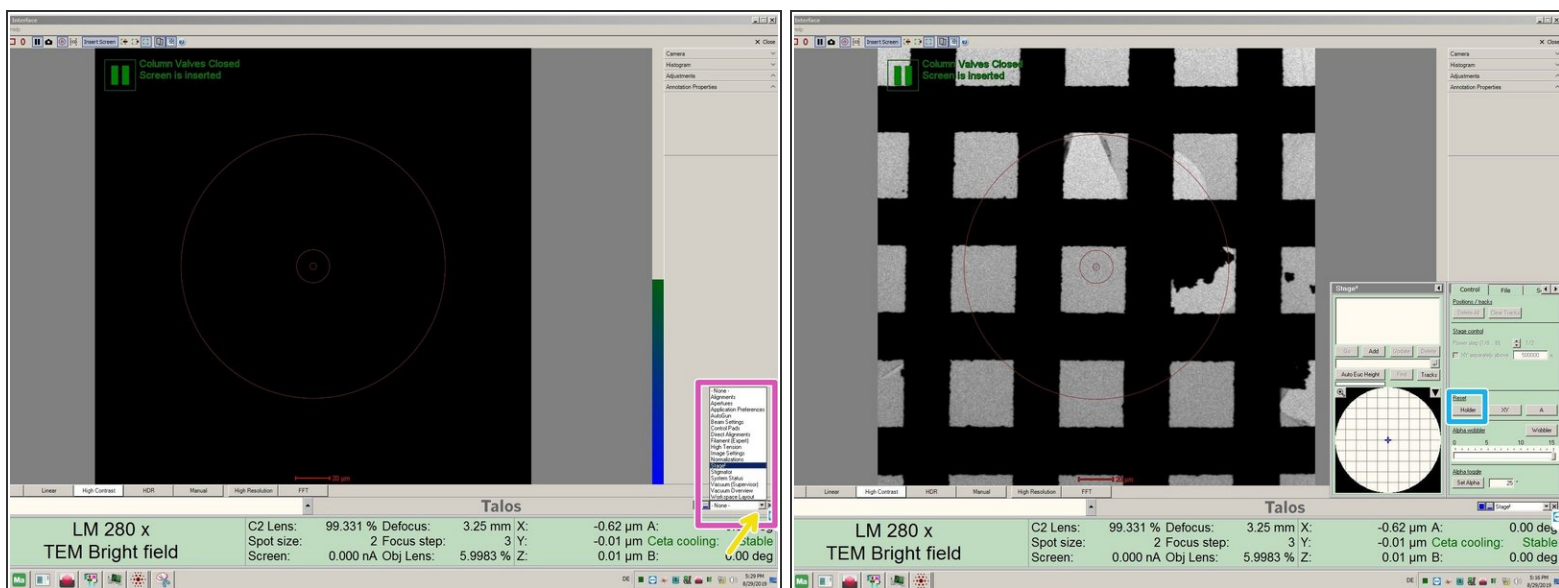
- [non magnetic tweezers](#) (1)
  - [Talos 120](#) (1)
  - [Single Tilt TEM holder](#) (1)
-

## Step 1 — The Talos



- Left screen with *TEM User Interface* and *Flucam Viewer*
- Right screen with Maps software.
- Support PC for data transfer and guide display.
- Left control panel
- Right control panel
- Talos
  - Stage of the Talos

## Step 2 — Reset the Stage



- Click in order to see the pop-up menu.
- Open the tab "Stage2" in the TEM user interface.
- Reset the Stage.

### Step 3 — Remove the sample holder from the microscope



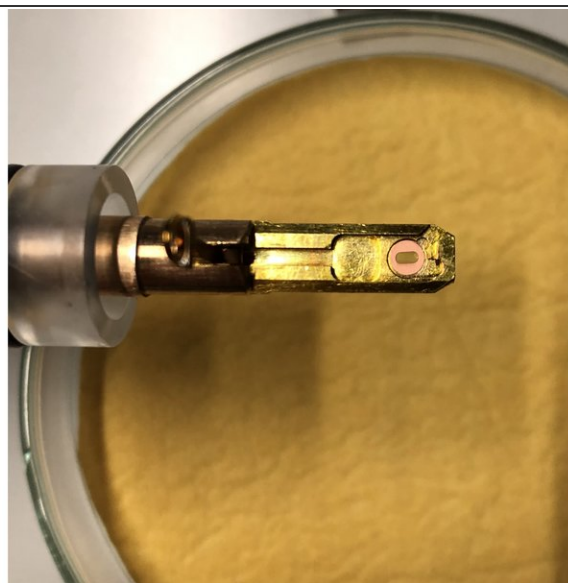
❗ Continue with Step 3 ("*Insert the sample into the TEM holder*"), if the TEM grid holder is not inserted in the microscope

⚠ Make sure you **push with your finger against the white part/stage** (see video) during all movements with the TEM holder.

- Gently pull the holder out until you feel a resistance and turn it clockwise until you feel a limit stop.
- In this position the holder can stay, if you need to rearrange your hands.
- Pull the holder out completely.

⚠ Do not tilt the holder during removal or insertion. An angle can lead to a vacuum failure of the system.

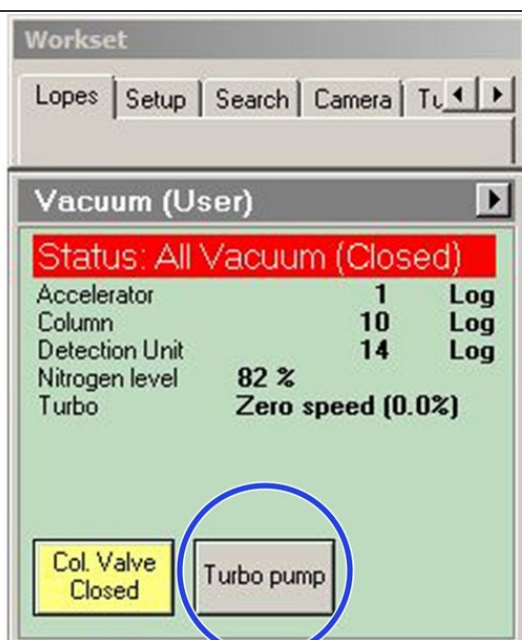
## Step 4 — Insert the sample into the TEM holder



- i** Use non magnetic forceps. Use a stereo microscope for better visibility.
- Open the holder clamp with the supplied needle
  - Place the grid into the groove with the forceps.
  - You can position the grid by gentle tapping the finger against the transparent tube of the TEM holder
  - Orientate the grid as displayed. The precise angle is important for the later set up.

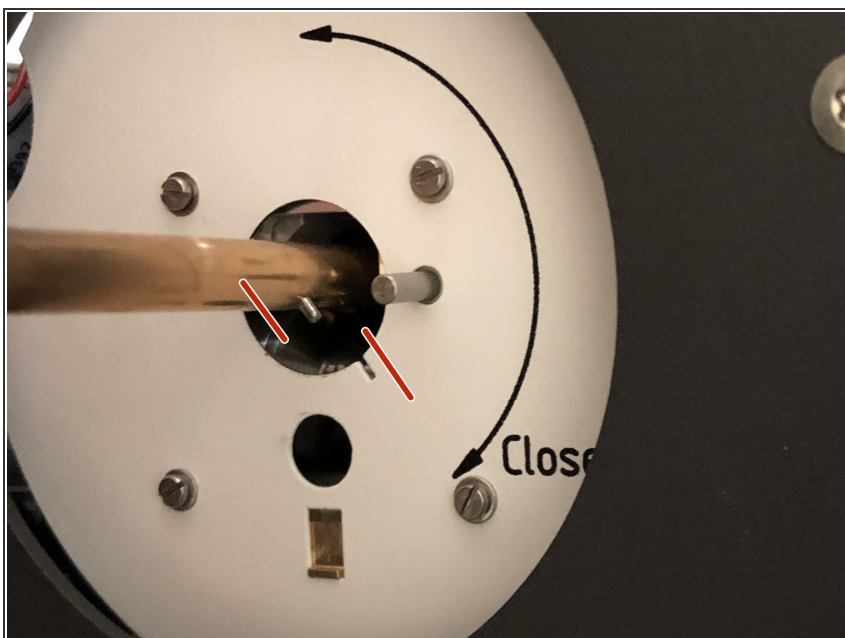


## Step 5 — Prepare the Sample Insertion



- Press "*Turbo Pump*", if the button is grey. If it is already yellow continue with the next step.
- ⓘ This step starts up the turbo pump and shortens waiting time.

## Step 6 — Prepare the Sample Insertion



- Align the small pin of the holder with the slit in the 5 o'clock position (during next step).
- ⚠ Make sure you handle the holder according to the video (next step).

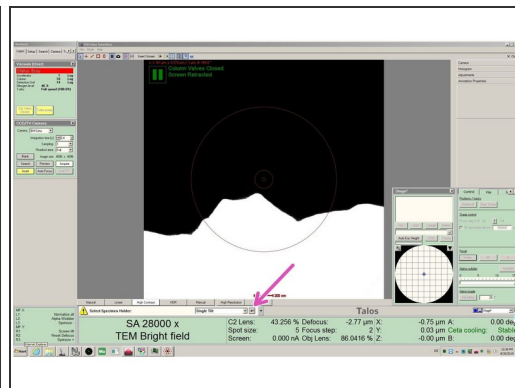
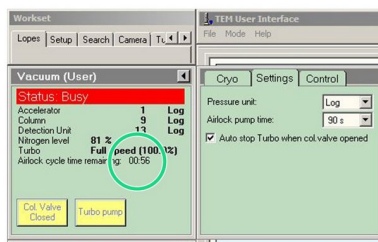
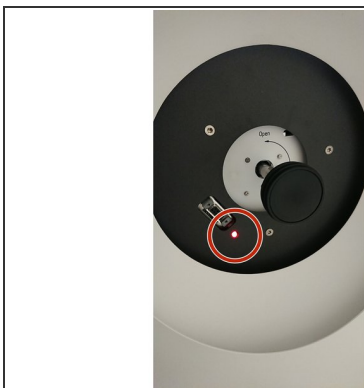
## Step 7 — Insert the sample holder



- Push the holder until you feel a resistance.

**⚠ Use both hands to stabilize the holder during insertion. Only touch it on the silver part behind the O-ring.**

## Step 8 — Airlock evacuation



- The red light is on until the evacuation of the airlock is finished. Only continue if the light disappeared.
- The pumping takes two minutes. If the countdown in the left screen is over the light is still on for a few more seconds.
- Confirm the *Single Tilt* specimen holder by clicking on the arrow.

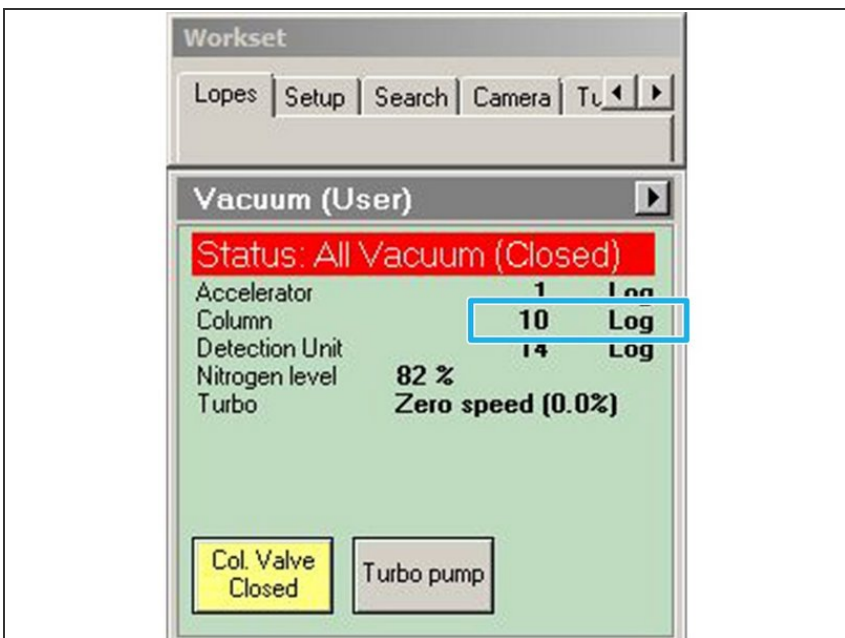


## Step 9 — Complete insertion of sample holder



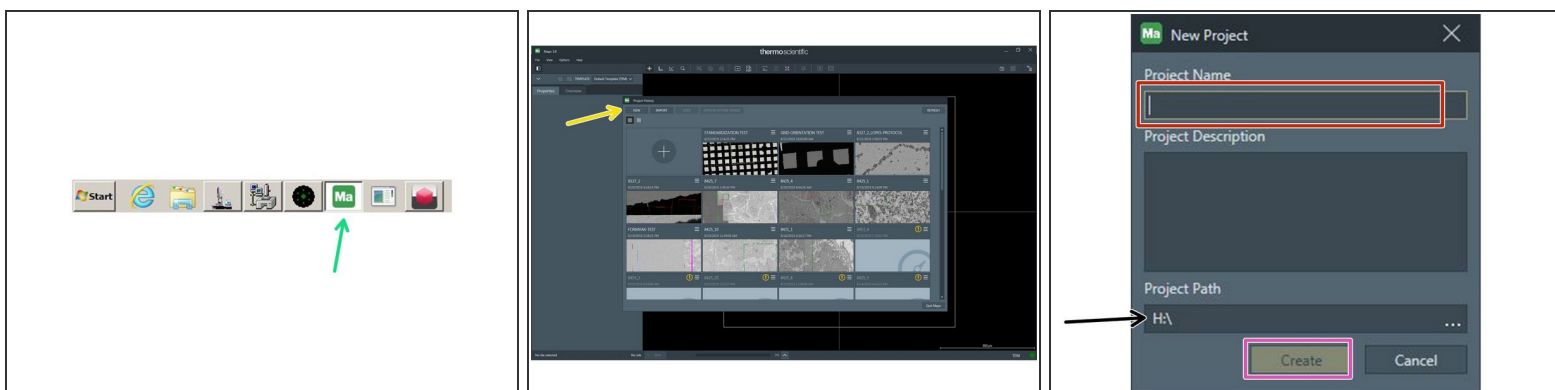
- Turn the holder counter clockwise, once the red light turned off.

## Step 10 — Check the column vacuum.



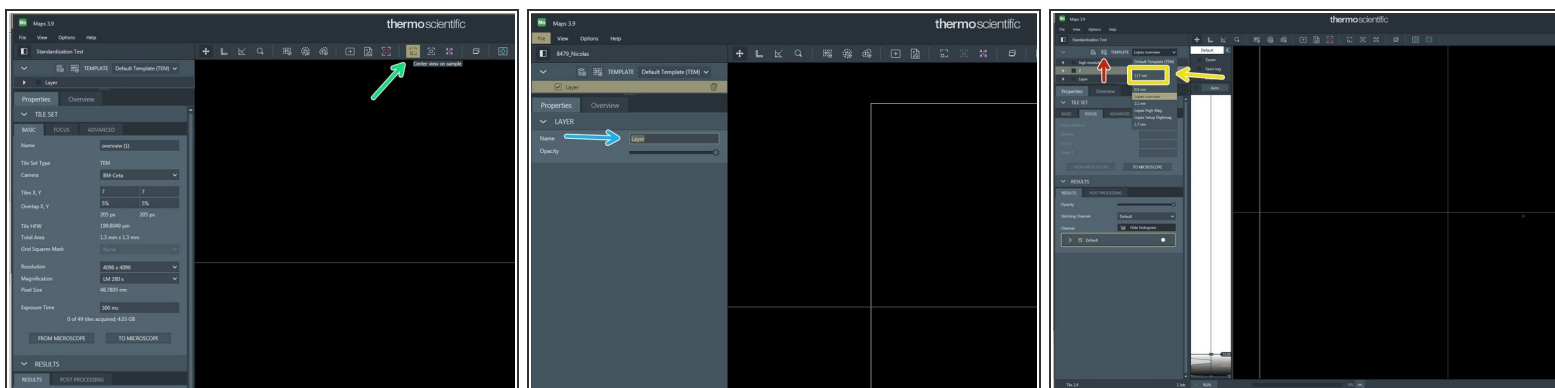
- The vacuum in the column should go below Log 30 before you continue working.
- ① If this is not the case within two minutes, go back to Step 2.
- ① If the vacuum is still bad after another insertion of the Holder and the "Col. Valve Closed" button is disabled, ask for support.

## Step 11 — Open Maps



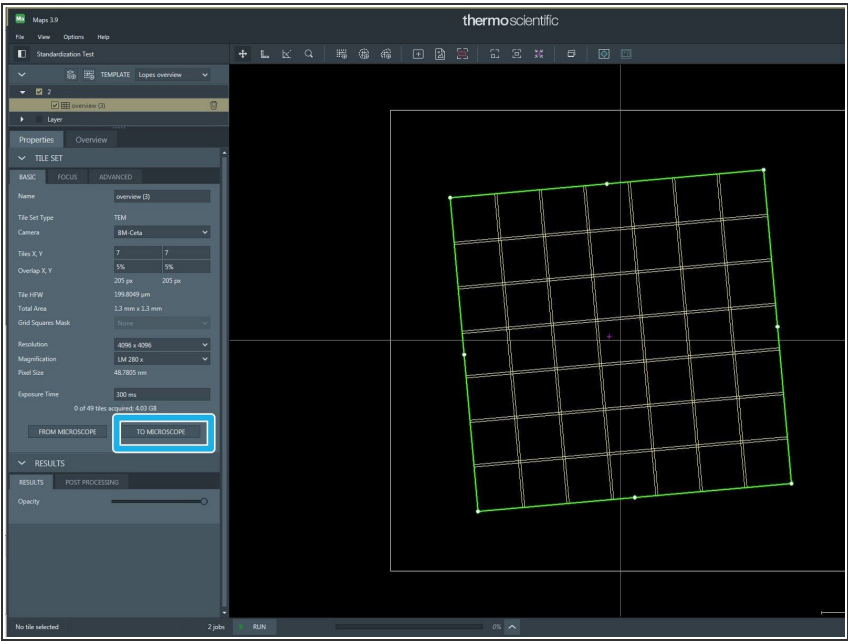
- Open Maps from the icon on the taskbar, if not already open.
- Generate "*new project*"
- Type in you project name
- Project Path should be set to "H:\"
- Press „Create“

## Step 12 — create an overview tileset



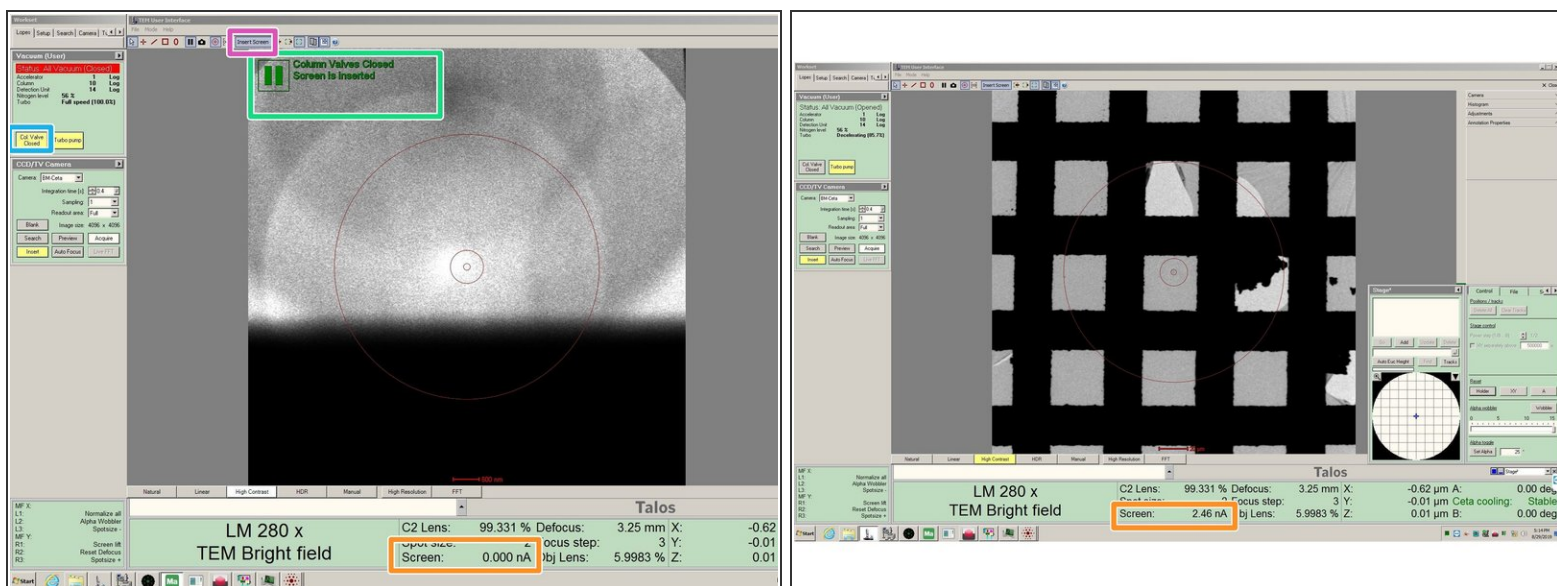
- *center view on sample*
- rename layer to „*overview*“
- select template "*117 nm*"
- add new tileset

Step 13 — Bring settings from Maps to microscope.



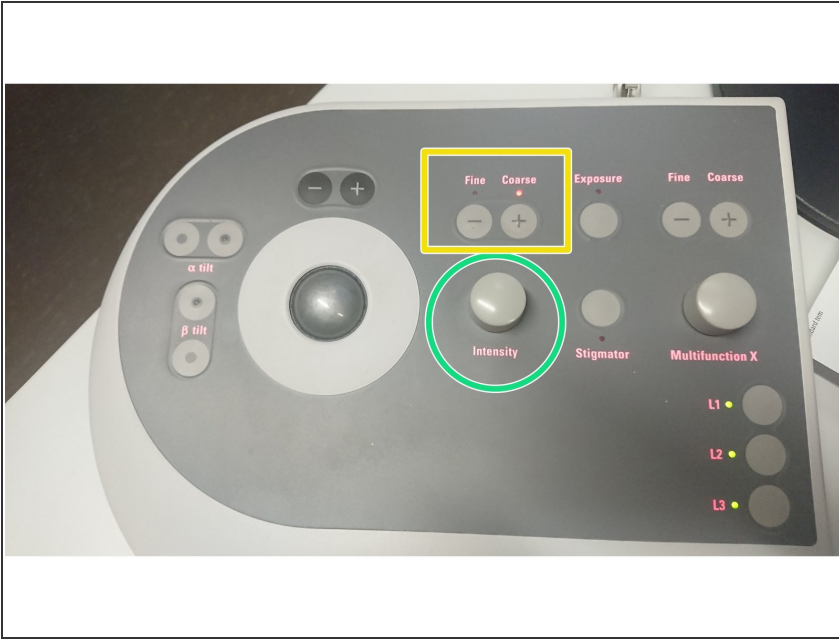
Click *"to microscope"*

## Step 14 — Check Screen current



- The Screen must be inserted to protect the main camera at this step.
  - If not inserted, insert screen.
- Open the column valves. By clicking on *"Col. Valve Closed"*
- The screen current must be between **5 nA** and **7 nA**. If this is not the case **see next step**.

## Step 15 — Adjust Screen current



- ❗ Skip this step if screen current is in range (**2.4nA - 3.4nA**)
- Use the intensity knob on the left panel.
- Turn it counter clockwise to **increase** screen current.
- Turn it clockwise to **decrease** screen current.
- Use the "fine" and "course" to adjust sensitivity of the knob.

## Step 16 — bring sample to eucentric height

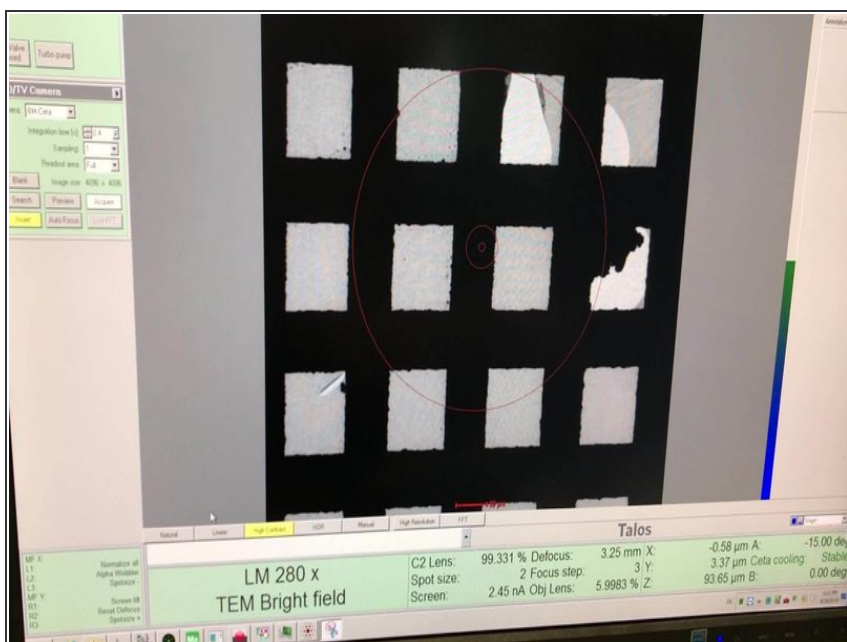


**i** The microscope performs best, if the sample is set close to eucentric height.

- Press **Eucentric focus** on the right panel to reset the focus of the lenses.
- Press **L2** (Alpha Wobbler) on the left control panel. The stage begins to tilt between  $\pm 15^\circ$
- Reduce the movement of the image in the Flu cam Viewer (left screen)
  - by changing the Z height with the **Z axis** button on the control panel
  - sensitivity can be adjusted by **+** and **-** buttons above the joystick
- The Z-height is shown in the User Interface on the left Screen. Use it as an orientation. (Z-values are usually between -20  $\mu\text{m}$  and +20  $\mu\text{m}$ )

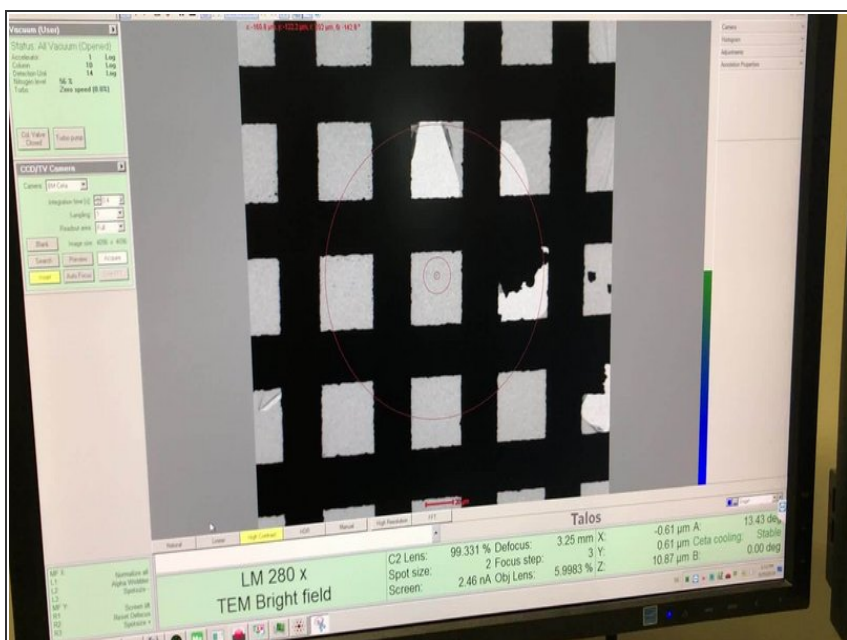


## Step 17 — Z-height bad



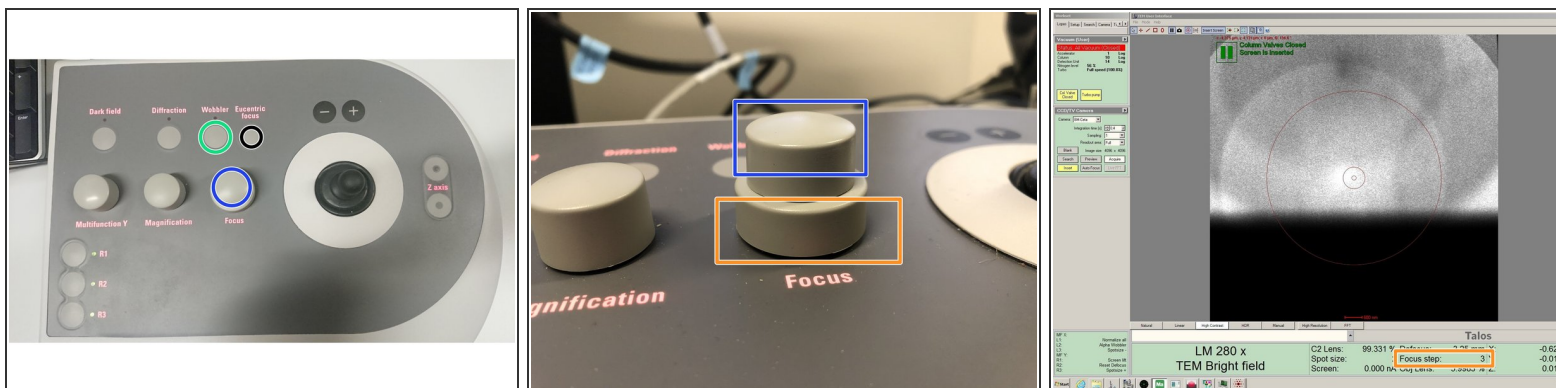
- The image center moves to the sides.
- ❗ The Z-height is shown in the User Interface on the left Screen. Use it as an orientation. (Z-values are usually between -20 um and +20 um)

## Step 18 — Z-height good



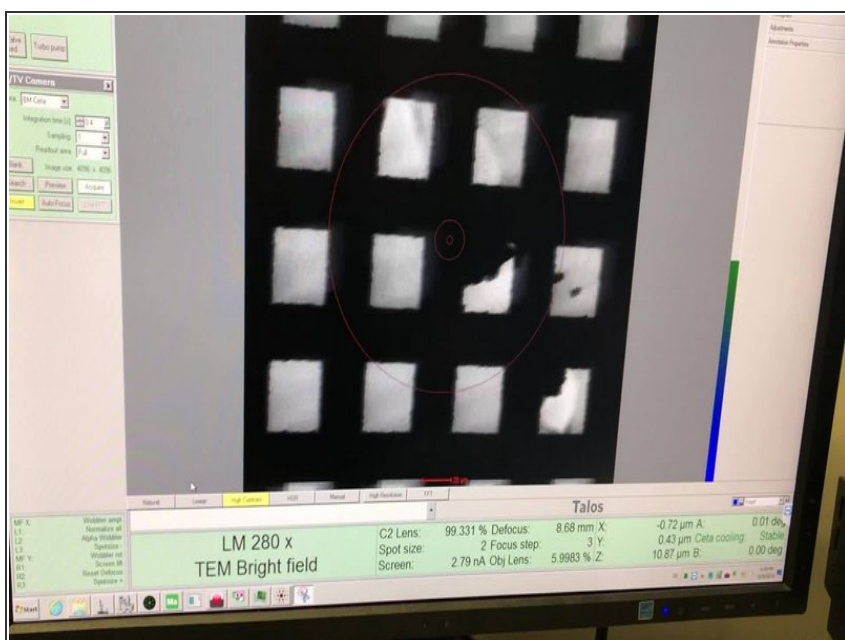
- The images stays centered.
- ❗ The Z-height is shown in the User Interface on the left Screen. Use it as an orientation. (Z-values are usually between -20 um and +20 um)
- ⚠ Press **L2** again to stop the Alpha Wobbler

## Step 19 — Adjust the focus



- Press Wobbler on the right control panel
- Turn the upper part of the **Focus** knob on the right panel to stop the image movement
- The sensitivity can be adjusted by the lower part of the button and the *Focus step* is shown in the user interface. Smaller numbers mean more sensitivity"
  - ① Use focus steps between 4 and 1
  - If you went to far off with the focus, press the button " *Eucentric focus*"

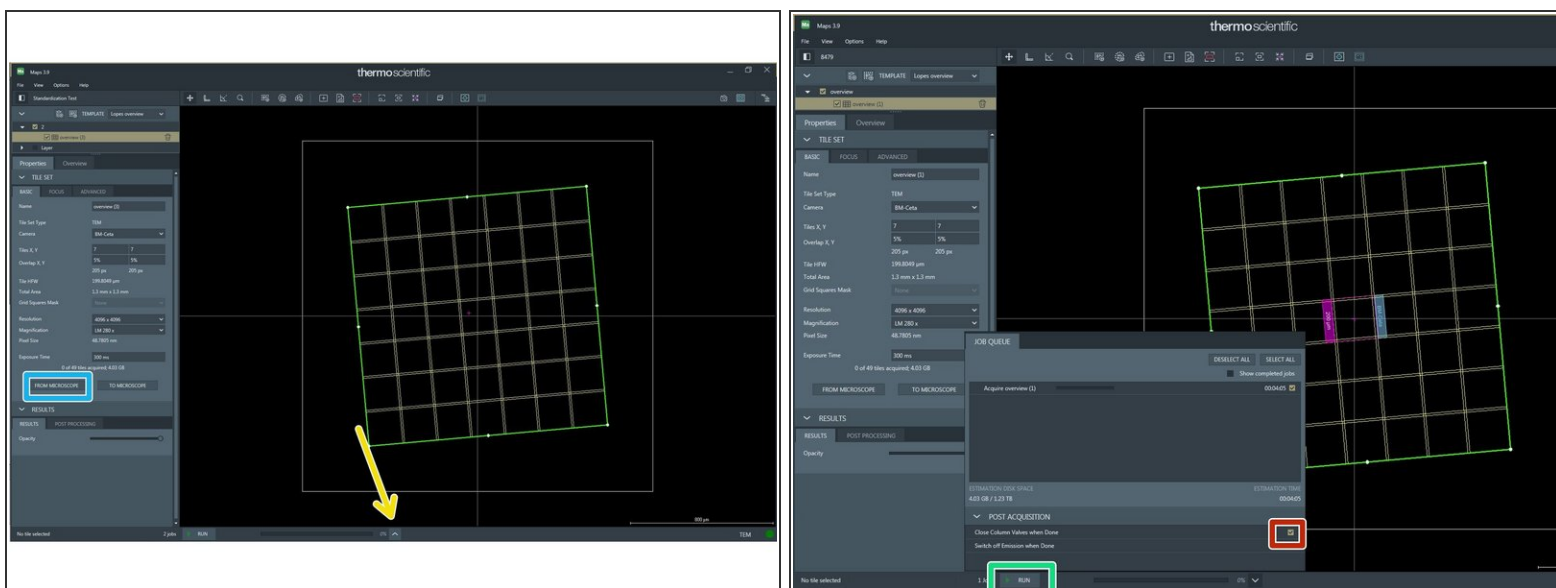
## Step 20 — Focussing with the Wobbler



- Example, where the images first moves a lot and does not move anymore, when the sample is focussed.

⚠ Press Wobbler (to stop) on the right control panel.

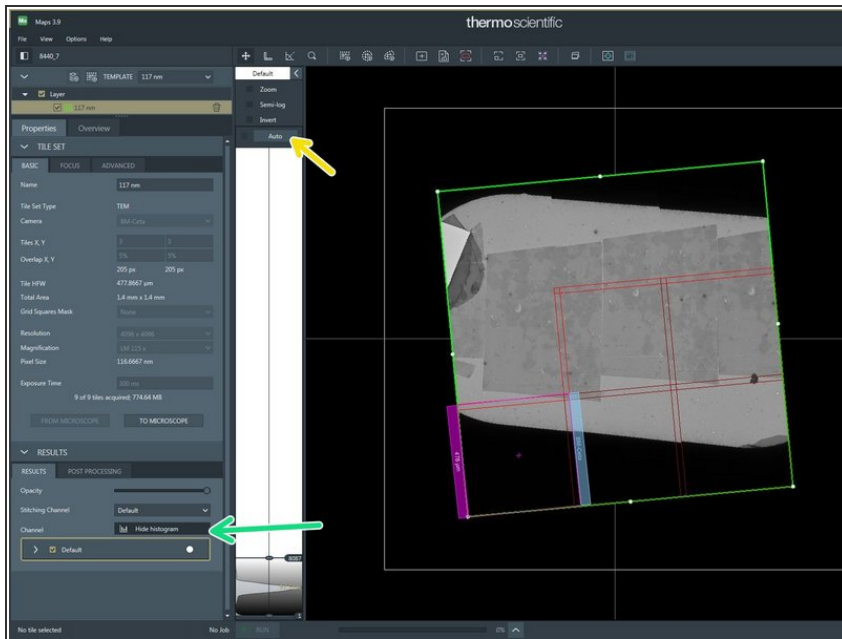
## Step 21 — Acquire overview



- Import the values from the microscope to Maps with the button " *from microscope* " in the overview tileset in Maps
- Click on the arrow to open the pop up menu with the job list.
- Make sure the option " *Close Column Valves when Done* " is activated.
- Press " *Run* " in Maps

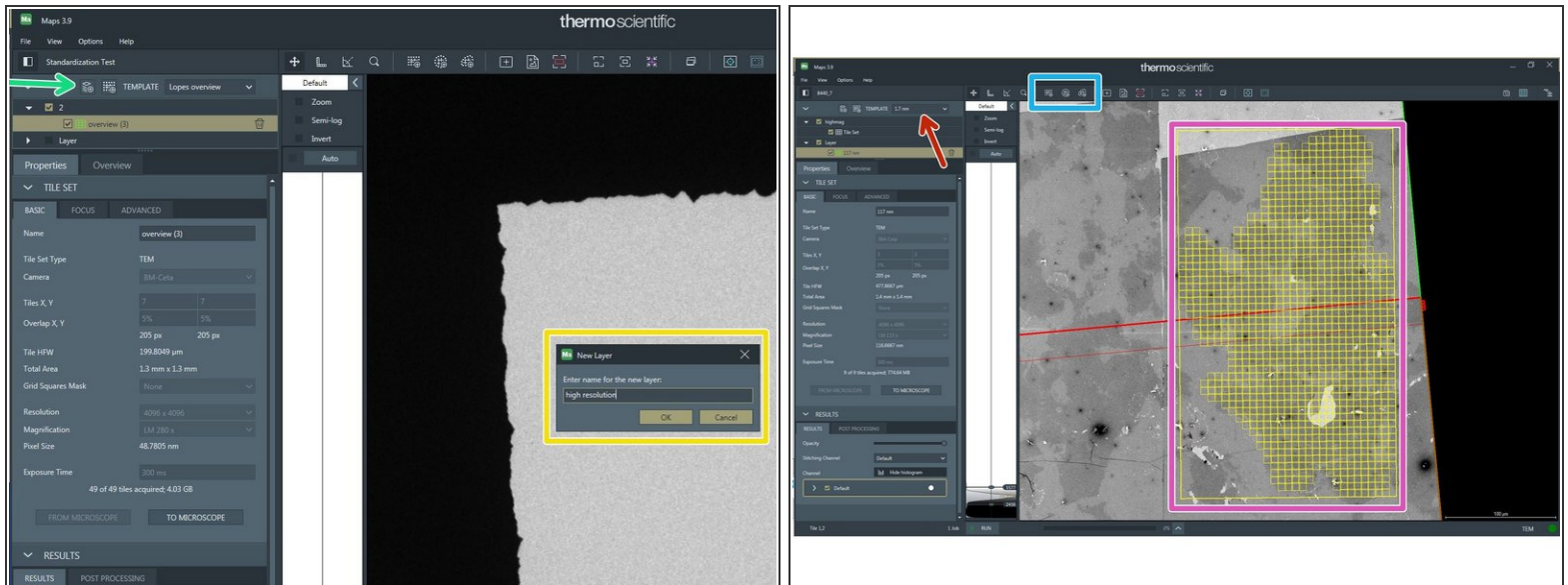
**⚠ Wait until job is finished! Before going over to the next step.**

## Step 22 — Navigate through the sample



- Go to Results tab, press Show histogram
- Choose „AUTO“
- Navigate with the mouse in Maps
  - ① Move the canvas by left clicking and pulling.
  - ① Use mouse wheel for zooming in and out.
- ⚠ Double click will move the stage.
- Search for your regions of interest.

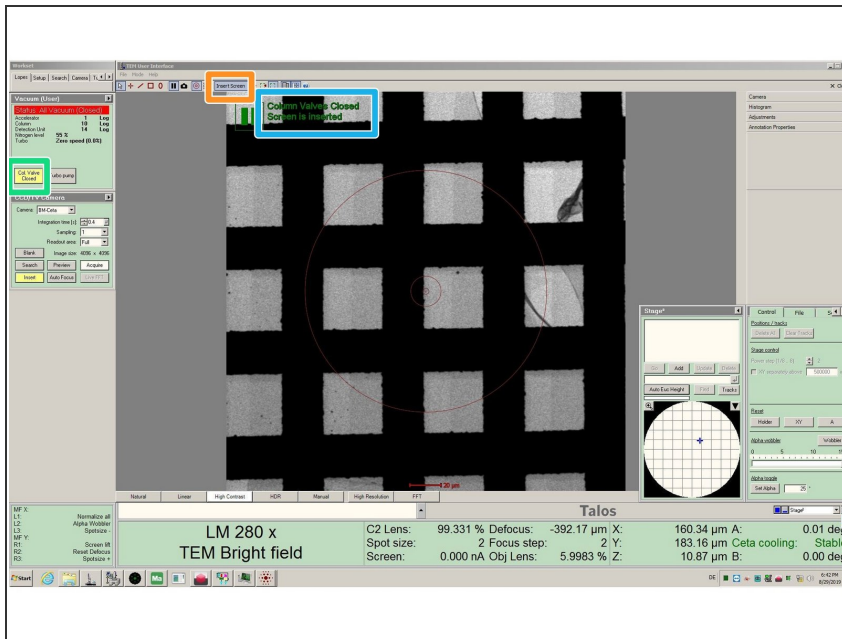
## Step 23 — setup high magnification



- Center view on the Region of interest
- Add a new Layer
  - Rename layer to highmag
- Choose a template with the desired pixelsize from the drop down menu.
- Choose a tool from the top bar
- Create a tile set on your ROI



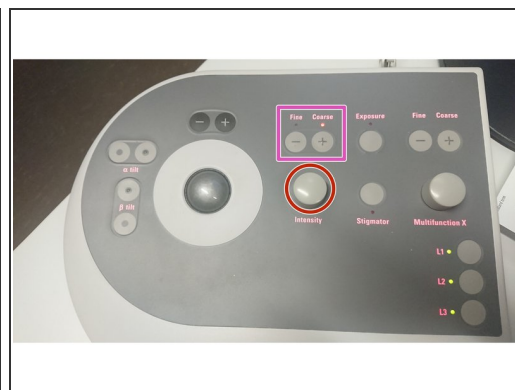
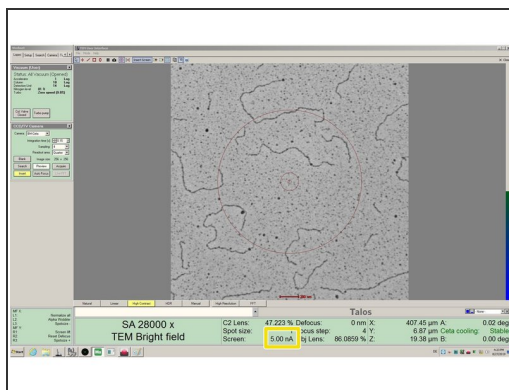
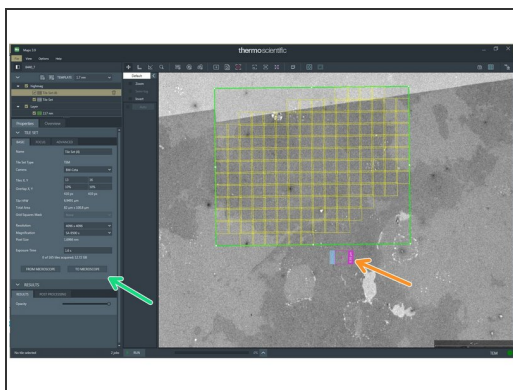
## Step 24 — set up high magnification



- Press *insert screen* to insert the Flu screen (left screen)
- "Screen is inserted"
- Make sure column valves are opened. Otherwise click on "*Col. Valve Closed*"



## Step 25 — Adjust screen current



- Press "*to microscope*" in the highmag tileset
  - Make sure the stage is positioned on your sample.
  - Check if the screen current is exactly 5 nA
    - Adjust screen current if necessary with the intensity knob on the left panel
  - ❗ *Turning clockwise lowers the screen current, Turning counter clockwise focusses the beam and increases the screen current.*
  - "*Fine*" and "*course*" adjust sensitivity of the intensity knob
- ⚠ **Do not click "*to microscope*" anymore. It will overwrite the settings you adjusted in the microscope**

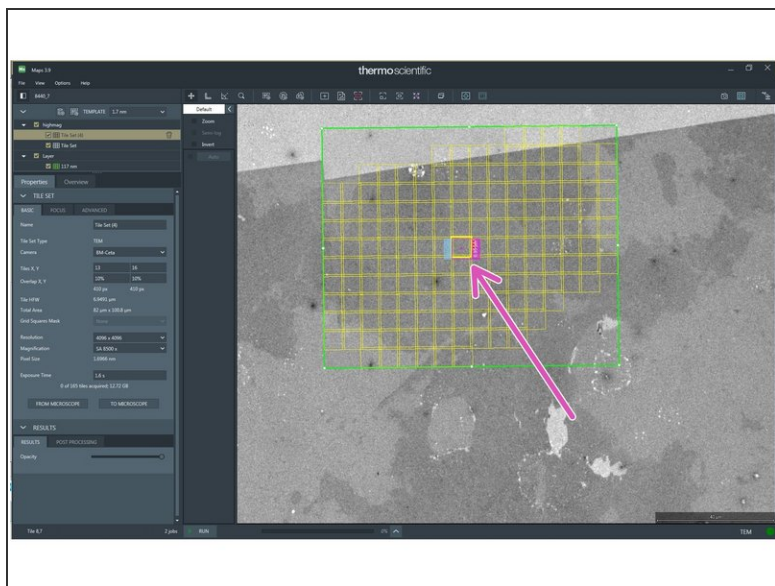
## Step 26 — Adjust eucentric height in Highmag



**i** The microscope performs best, if the sample is set close to eucentric height

- Press **Eucentric focus** on the right panel to reset the focus of the lenses.
- Press **L2** (Alpha Wobbler) on the left control panel.
- Reduce the movement of the image in the Flu cam Viewer
  - by changing the Z height with the **Z axis** button on the control panel
  - sensitivity can be adjusted by **+** and **-** buttons above the joystick
- The Z-height is shown in the User Interface on the left Screen. Use it as an orientation. (Z-values are usually between -20  $\mu\text{m}$  and +20  $\mu\text{m}$ )
- press **L2** again to stop the Alpha Wobbler

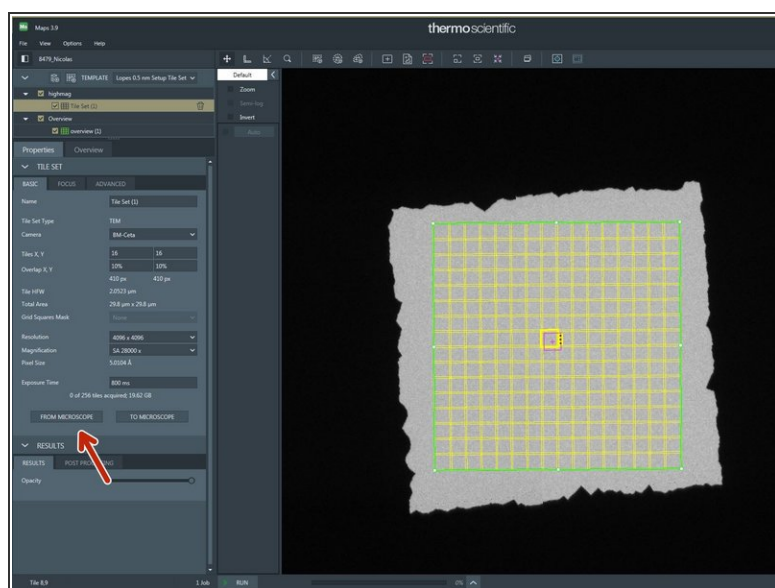
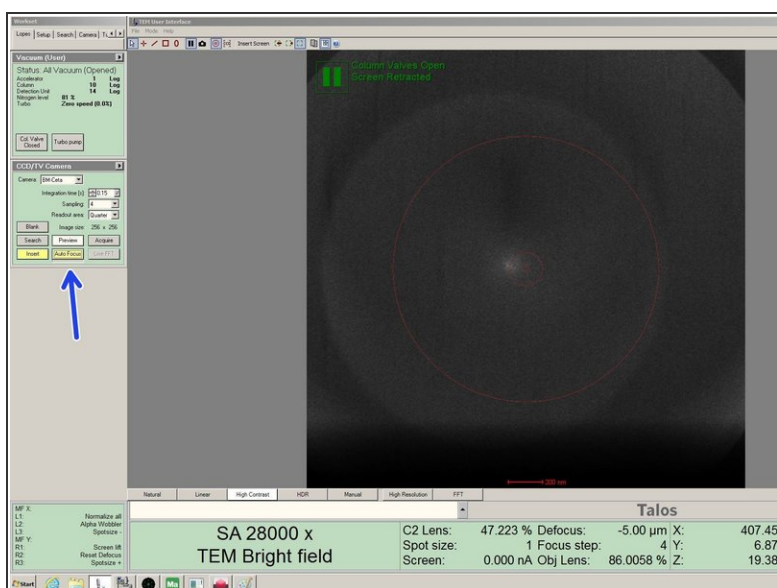
## Step 27 — Set up Acquisition Tile Sets



**⚠ Make sure the Flu screen is inserted! Otherwise the camera can be damaged.**

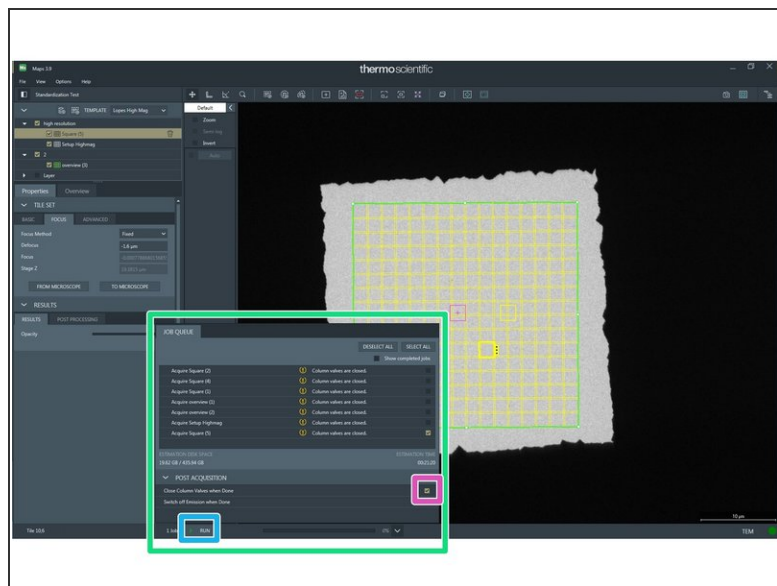
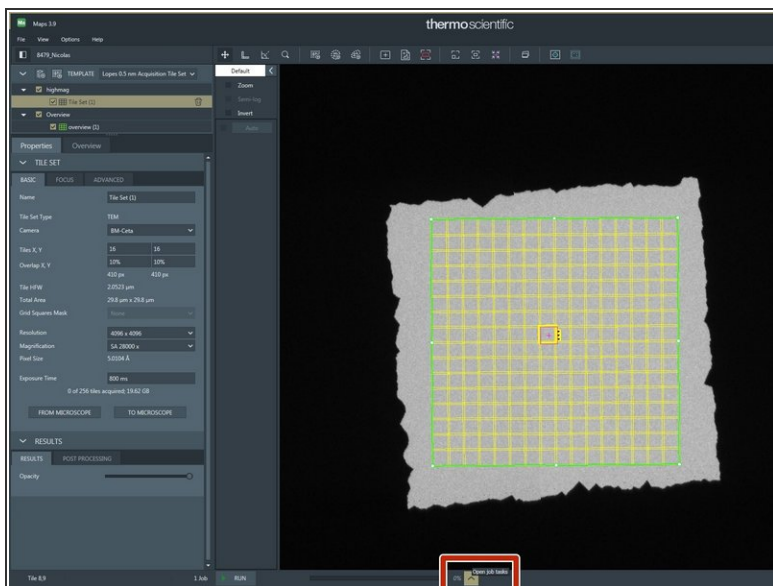
- Press **R1** on the right panel to insert the Flu screen (left screen)
- Double click with the mouse, in order to move the stage (pink square in Maps) to the center of your region of interest.

## Step 28 — Autofocus



- Click on "autofocus" (left screen) and wait until autofocus has finished (button turns grey again)
- Click on "from microscope", when the autofocus has finished.
- Go back to the step "Set up Acquisition Tile Sets" and repeat the steps you did for the first ROI for every ROI you want to be acquired in this project.
- Continue, if you have set up enough ROIs.

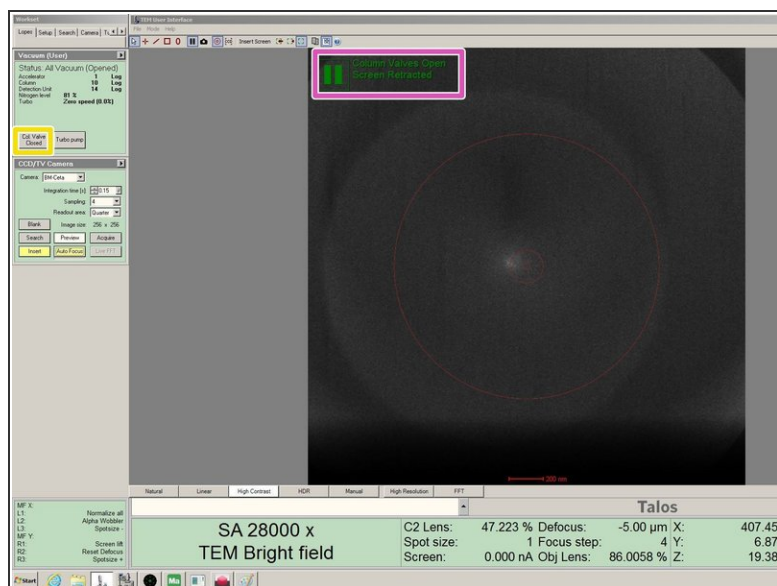
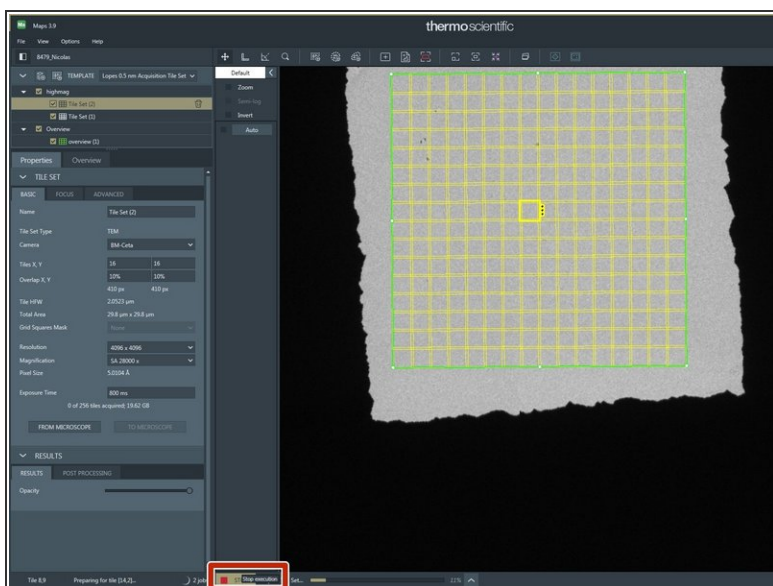
## Step 29 — Start Maps Job



- Open the pop up menu.
- Check the job list and select only the tile sets you want to be acquired.
- Make sure the option "Close Column Valves when Done" is activated
- Press *"Run"*



## Step 30 — Finishing the Project



- Stop the Maps Job, if it is still running.
- Check if column valves are closed.
- Close them, if they are open.

## Step 31 — Remove TEM holder



- Gently pull the holder out until you feel a resistance and turn it clockwise.
- In this position the holder can stay, if you need to rearrange your hands.
- Pull the holder out completely.

**⚠ Do not tilt the holder during removal or insertion. An angle can lead to a vacuum failure of the system.**



