



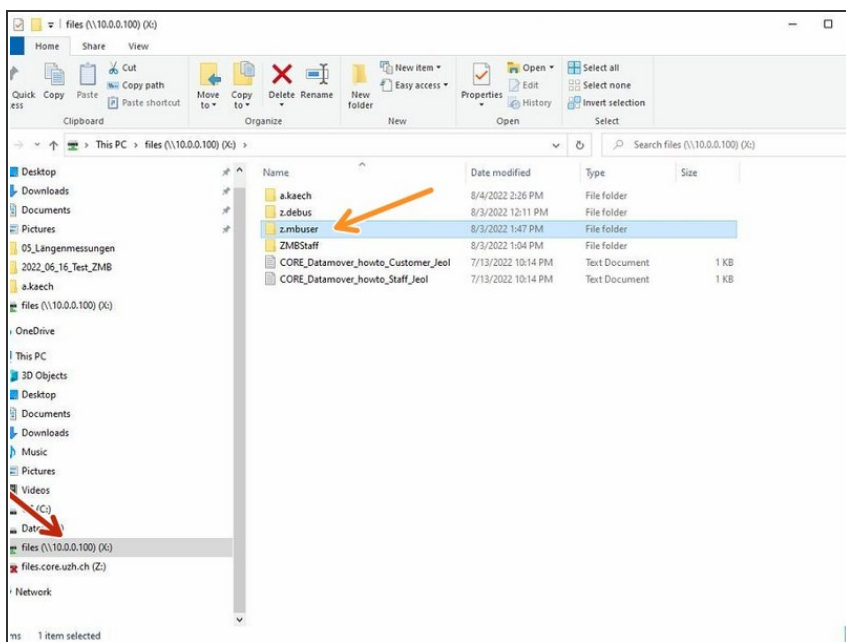
SEM - Jeol JSM-IT700HR: Part 2 - Saving data

How are single images saved and EDX/EDX data and how are all data transferred to the server.
How do you open data on a VM to work with Jeol database files.

Written By: Andres Kaech

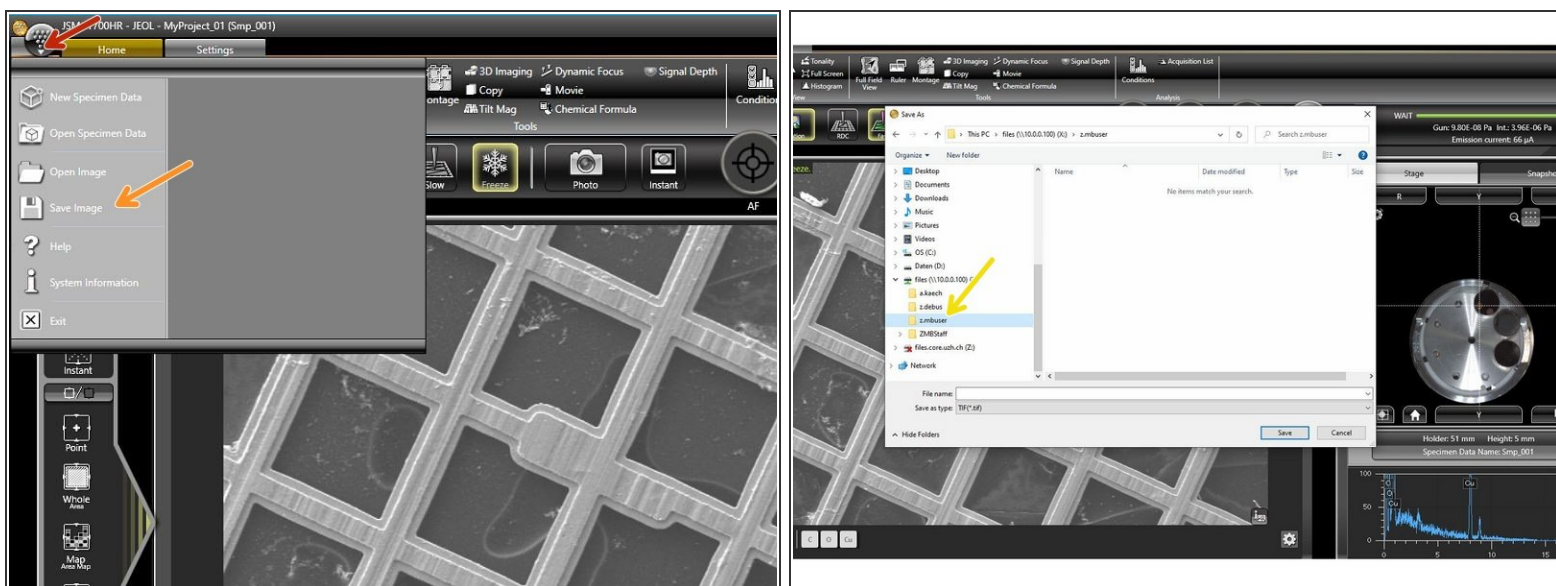


Step 1 — Create your directory



- Open the file drive in the windows explorer.
- Create a folder with your ZMB username, e.g. j.doe
- ① Save all data in this folder.

Step 2 — Saving single images directly to your folder



- Acquire image by scanning a frame with desired options and freeze.
- Open menu.
- Select "Save Image"
- Select location, type in name and save your file.

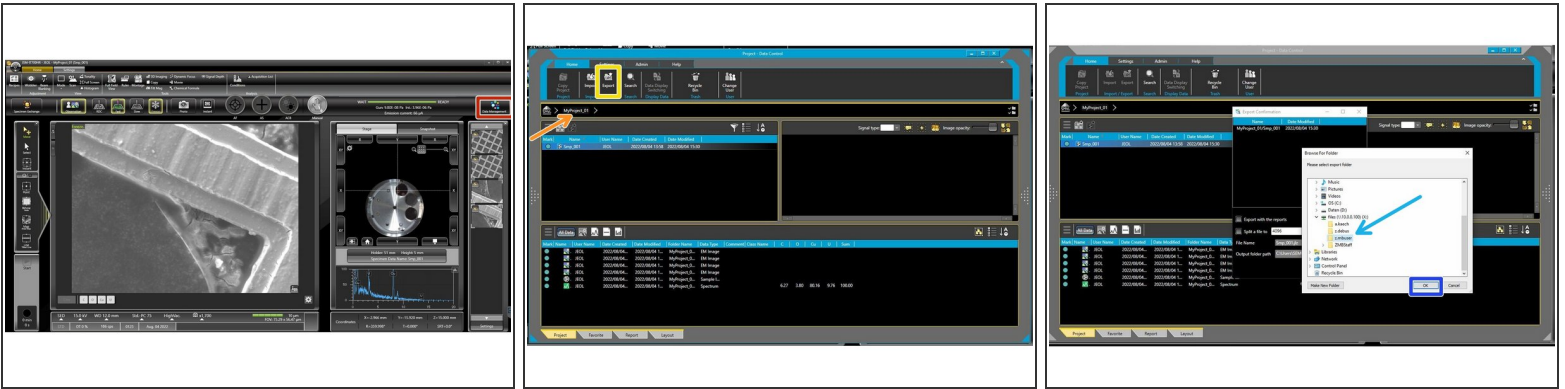
Step 3 — Using the autosave function



i When using the autosave function, images will always be stored in the internal Jeol database. Smileview is required to access images (see next steps) .

- Select "Settings" tab
- Select "Image"
- Activate "Auto Save" function.
- Select your created directory to store images and snapshots.
- Close window.
- Select "Home" tab and continue imaging.
- Press "Photo" to capture image and autosave (arrow). All images are kept in the image gallery (square) and saved to an internal Jeol database

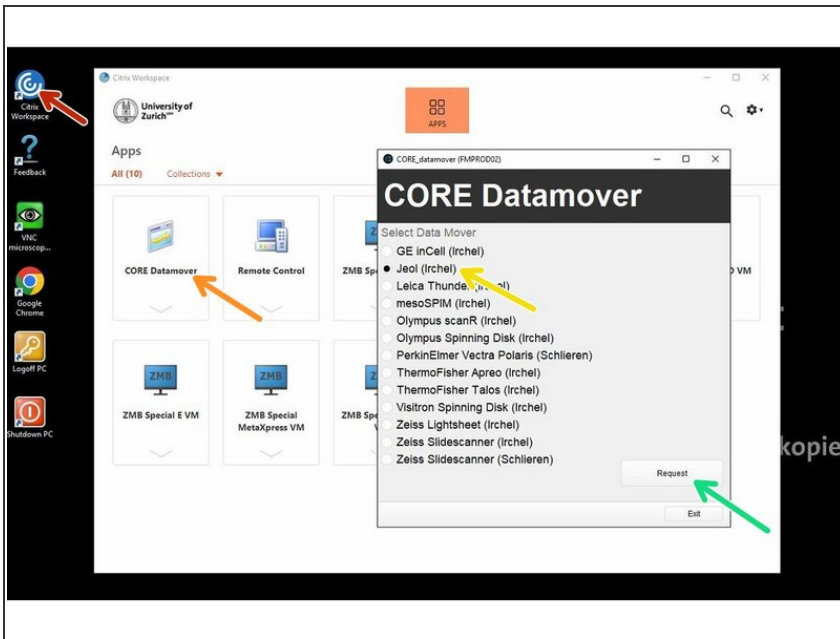
Step 4 — Viewing data in Jeol database and exporting to your drive



i When using the autosave function and acquiring EDX spectra, all data will be stored in the internal Jeol database. Smileview is required to access images and spectra later.

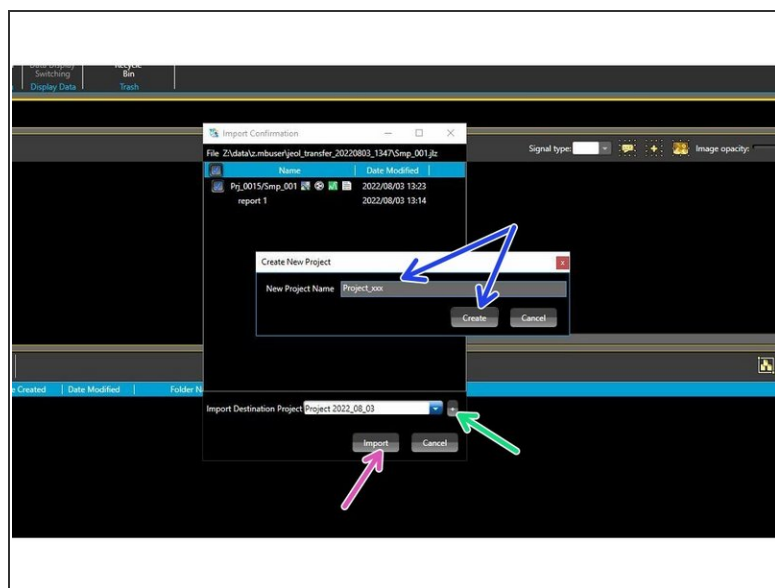
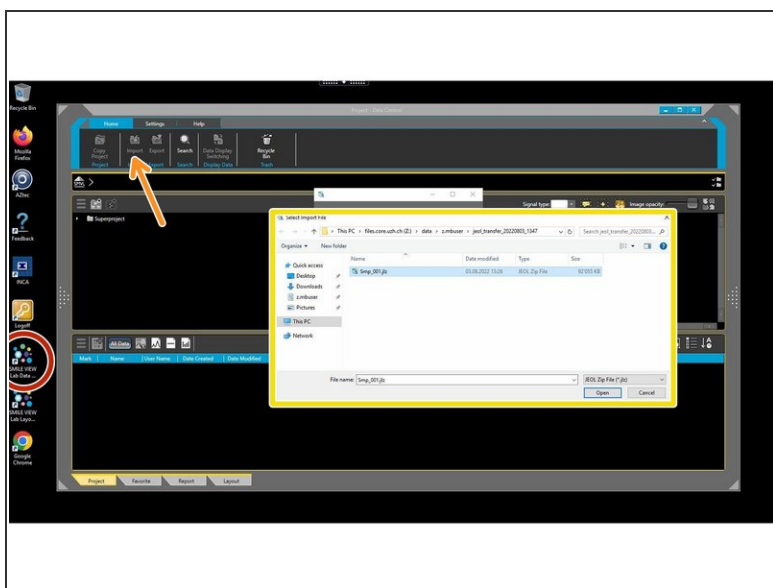
- Open Smile View software by clicking "Data Management".
- Click on your project e.g. MyProject_01
- Export data.
- Select your folder.
- Confirm and export

Step 5 — Transfer data to ZMB server



- Login at support computer.
 - Start Citrix client.
 - Start data mover
 - Select "Jeol (Irchel)"
 - Press "Request"
- ① You get a confirmation, that your request is created. You will be notified by email, as soon as your data are moved to the server in your directory, e.g. j.doe.

Step 6 — Accessing your Jeol database data



- Book the "ZMB Special E VM" and login.
- ❗ Only ZMB Special E VM contains the Smile view lab data control software of Jeol.
- Open the "SMILE VIEW Lab Data..." software.
- Click on "Import"
- Select your data.
- Create a project where the data should be imported to.
- Insert name and create.
- Import.