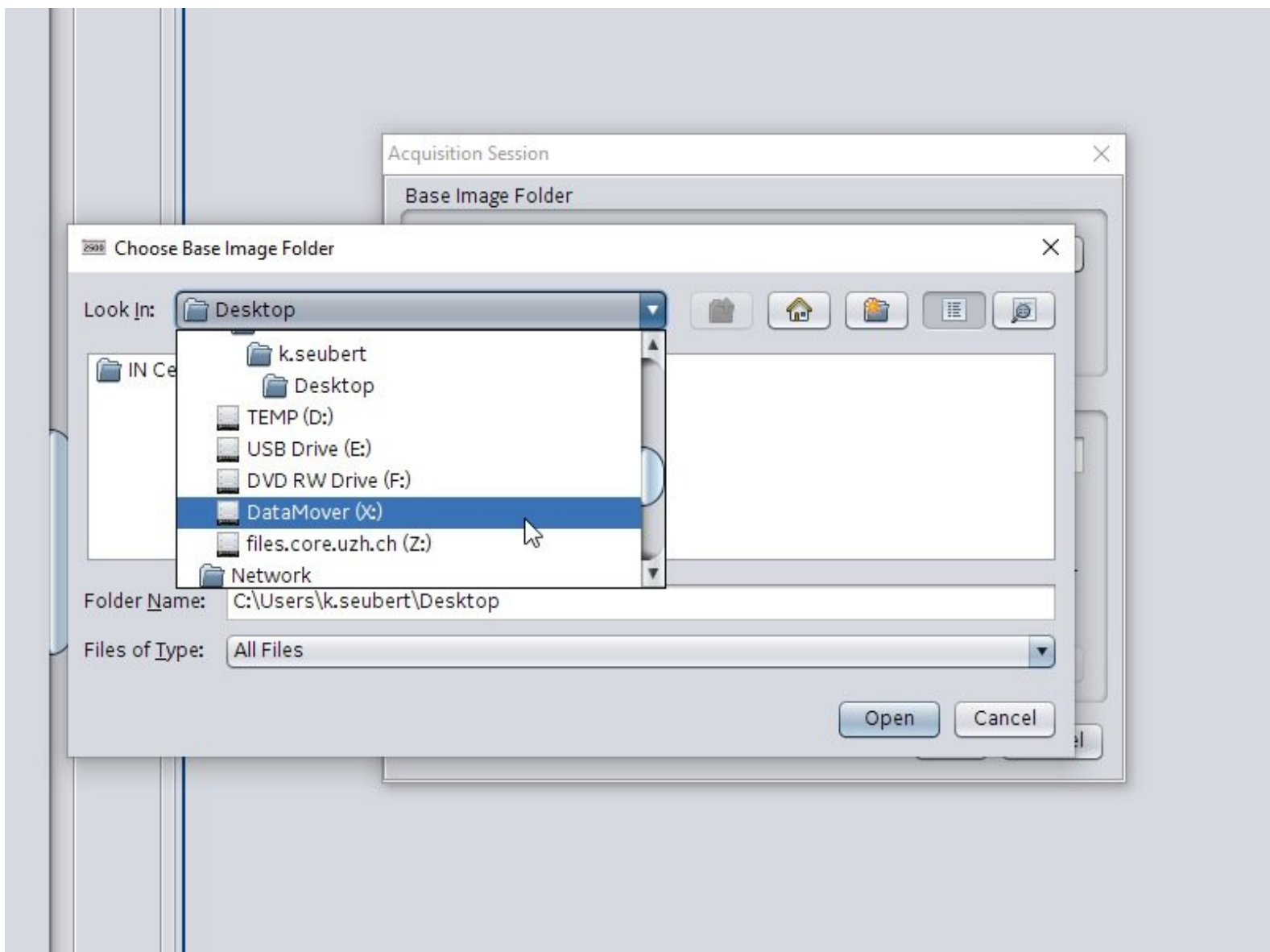


# GE InCell Analyzer 2500 HS - 5: Saving & automatic transfer of data

This guide explains how to save your data at the GE InCell and how you need to initiate the transfer of your files.

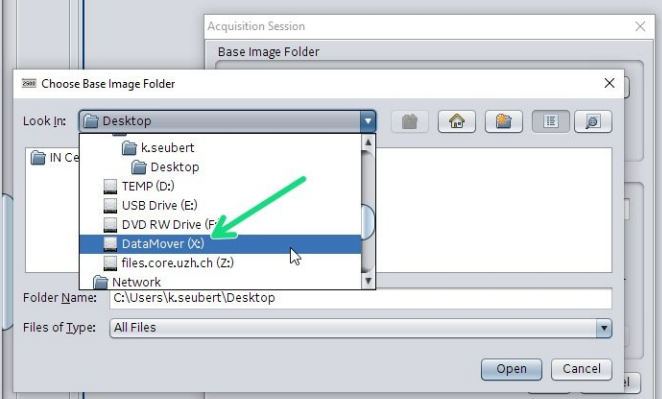
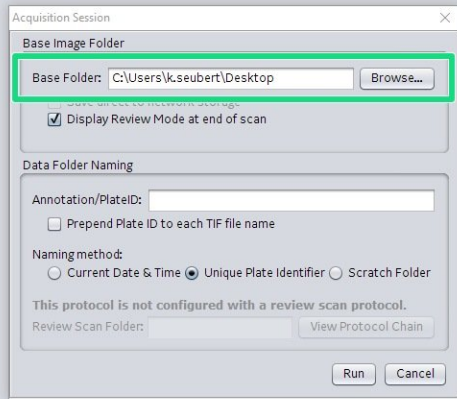
Written By: Jannic Debus



## INTRODUCTION

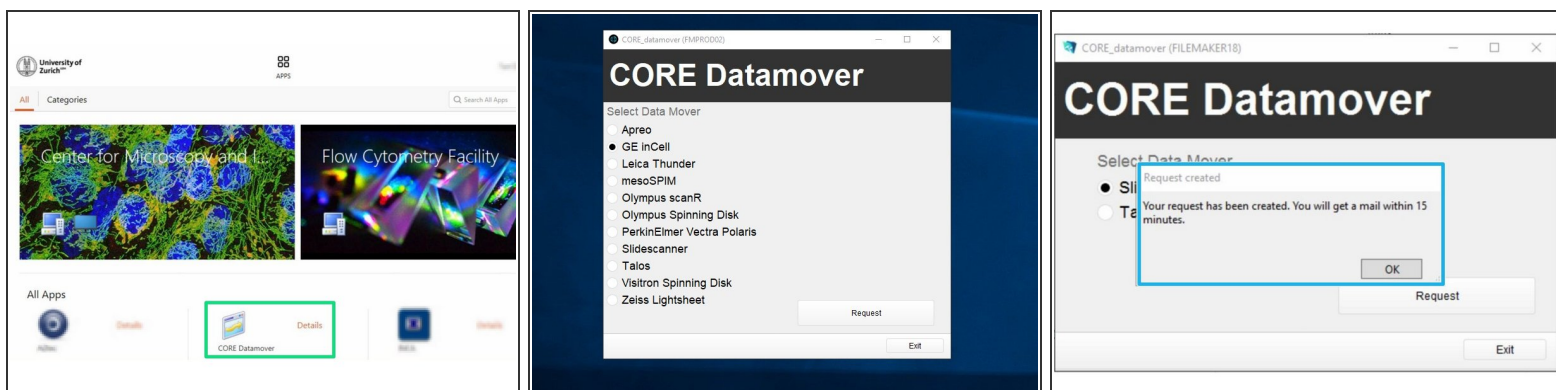
For acquisition of large data sets or long term experiments it is recommended that you use the available X: (cache) drive. By doing so acquisition and saving is not limited by the network speed. Transfer of the files can be initiated through our Data Mover solution.

## Step 1 — Define storage location in GE InCell Analyzer



- Before you start a **"Scan"**, you will be asked for the storage location. Please make sure you save on **"DataMover(X:)"**.
- ❗ To achieve optimal performance/throughput it is always recommend to save to the X network drive. Saving directly to the files.core.uzh.ch file server is possible but not recommended. USB drives are also blocked.
- ⚠ Once you are done, please remove your sample and clean the microscope appropriately.

## Step 2 — Request automatic transfer



**⚠ Do this step after the Software is closed.**

- i** This step can be done by launching Citrix Workspace directly on the instrument computer but also from everywhere else where you can access Citrix ([Citrix guides](#)).
- Open **Citrix Workspace** and log on.
- Select and launch the application **"CORE Datamover"** (the first start of the application can take up to 3 minutes)
- Select the desired Datamover, in this case **"GE InCell"**
- Click **"Request"**.
- You will get a confirmation that your request has been created. Your transfer job will be queued within 15 minutes.
- i** If you do not receive an email after your request or if you need further support, please contact us at [it@zmb.uzh.ch](mailto:it@zmb.uzh.ch)