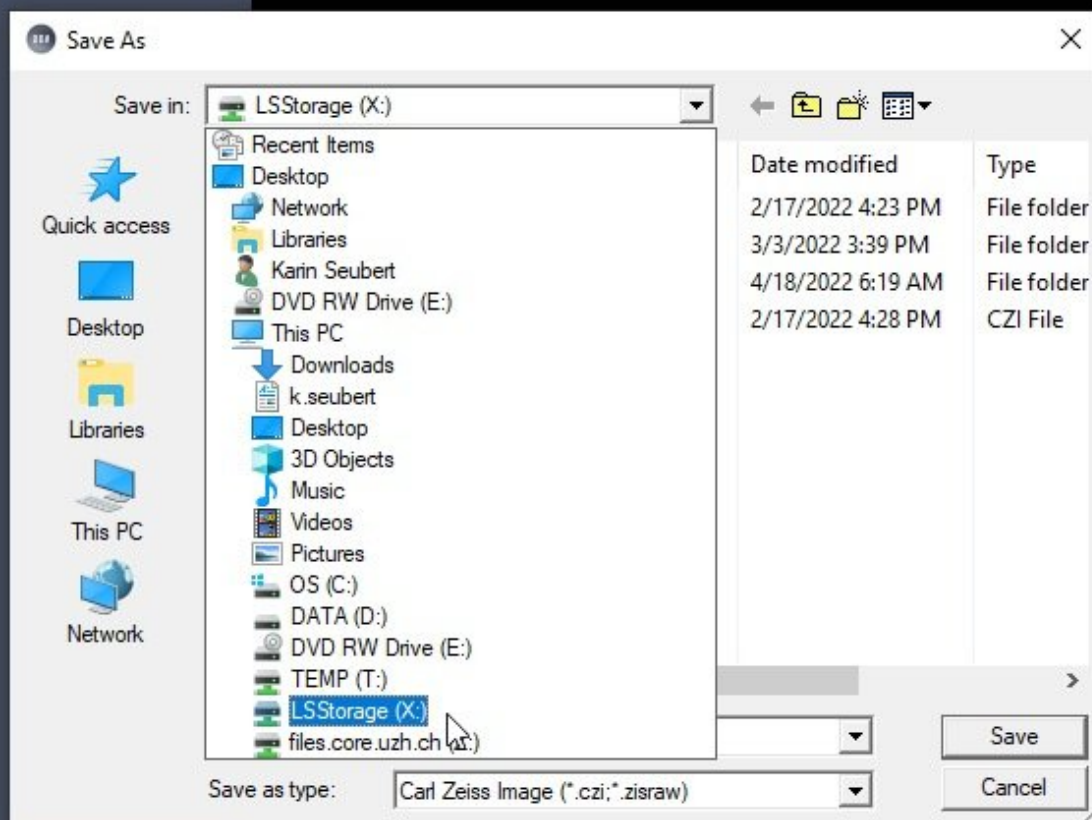


Lightsheet Zeiss Z.1 - Saving & automatic transfer of data

This guide explains how to save your data at the Zeiss Lightsheet Z.1 and how you need to initiate the transfer of your files.

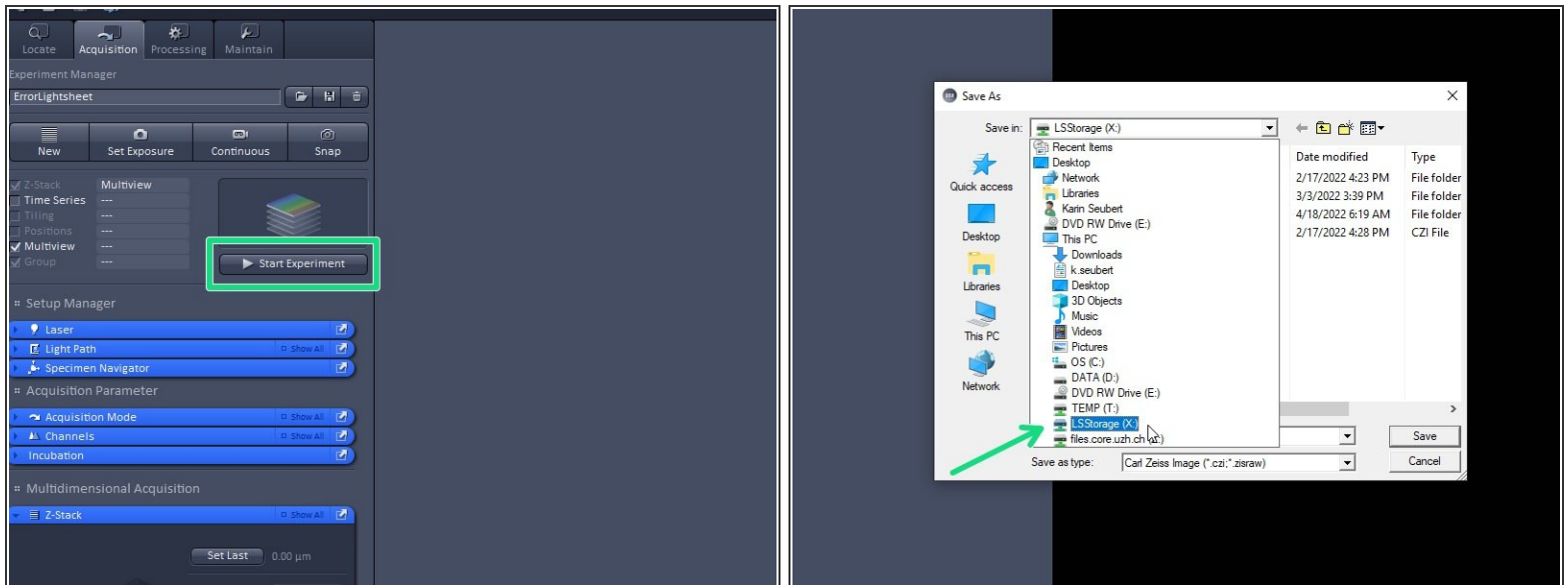
Written By: Jannic Debus



INTRODUCTION

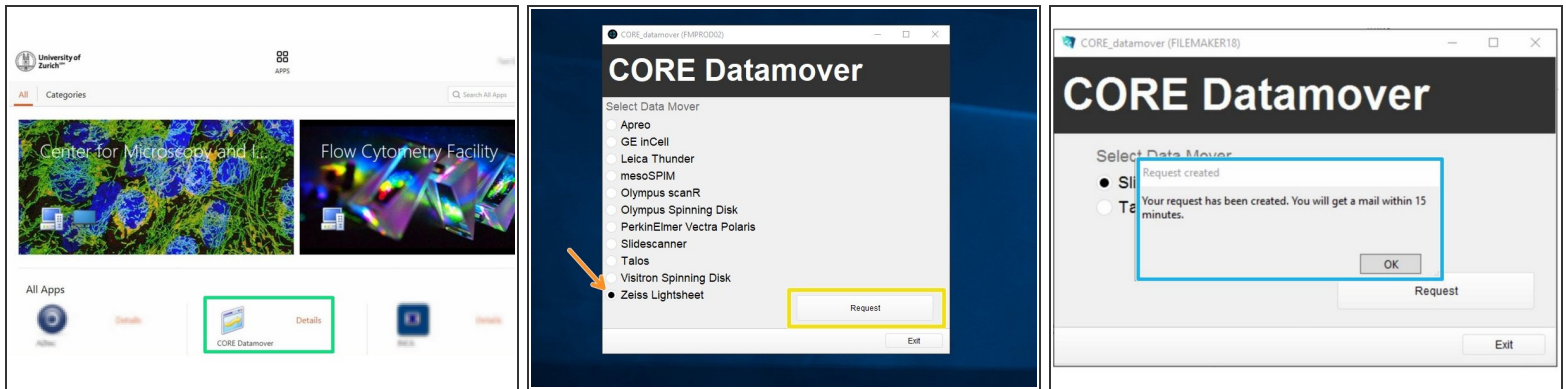
For acquisition of large data sets or long term experiments it is recommended that you use the available X: (cache) drive. By doing so acquisition and saving is not limited by the network speed. Transfer of the files can be initiated through our Data Mover solution.

Step 1 — Define storage location in Zeiss ZEN



- When you **"Start"** your experiment, you will be asked for the storage location. Please make sure you save on **"LSStorage (X:)"**.
- ❗ To achieve optimal performance/throughput it is always recommend to save to the X network drive. Saving directly to the files.core.uzh.ch file server is possible but not recommended. USB drives are also blocked.
- ⚠ Once you are done, please remove your sample and clean the microscope appropriately.

Step 2 — Request automatic transfer



⚠ Do this step after the Software is closed. Starting the Datamover while ZEN is still open can cause data loss.

- i** This step can be done by launching Citrix Workspace directly on the instrument computer but also from everywhere else where you can access Citrix ([Citrix guides](#))
- Open Citrix Workspace and log on.
- Select and launch the application "CORE Datamover" (the first start of the application can take up to 3 minutes)
- Select the desired Datamover, in this case "Zeiss Lightsheet"
- Click "Request".
- You will get a confirmation that your request has been created. Your transfer job will be queued within 15 minutes.
- i** If you do not receive an email after your request or if you need further support, please contact us at it@zmb.uzh.ch