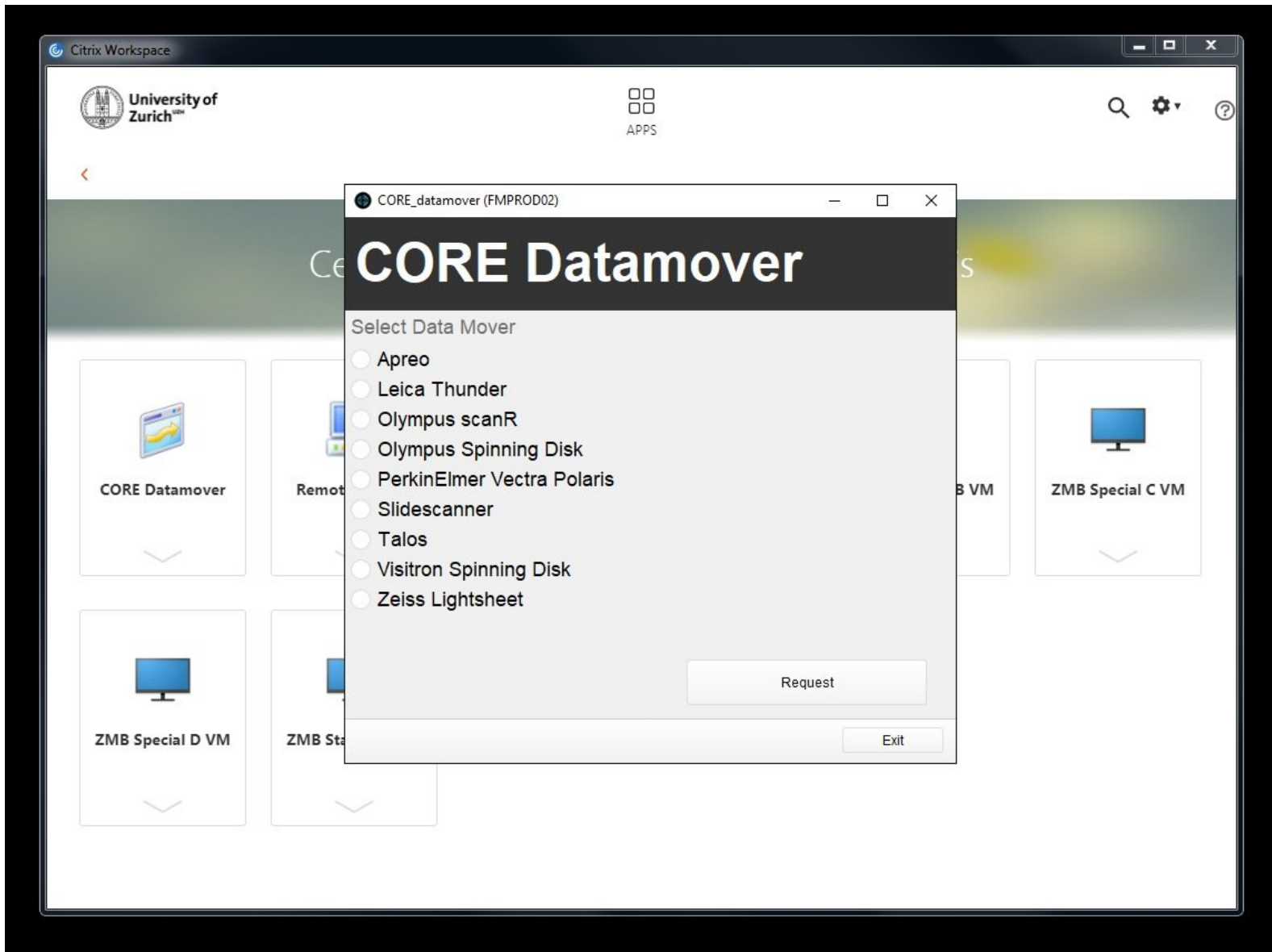


Spinning Disk - Visitron (Irchel) - Datamover

How to save your data on the automatic-transfer and retrieve data via the Datamover.

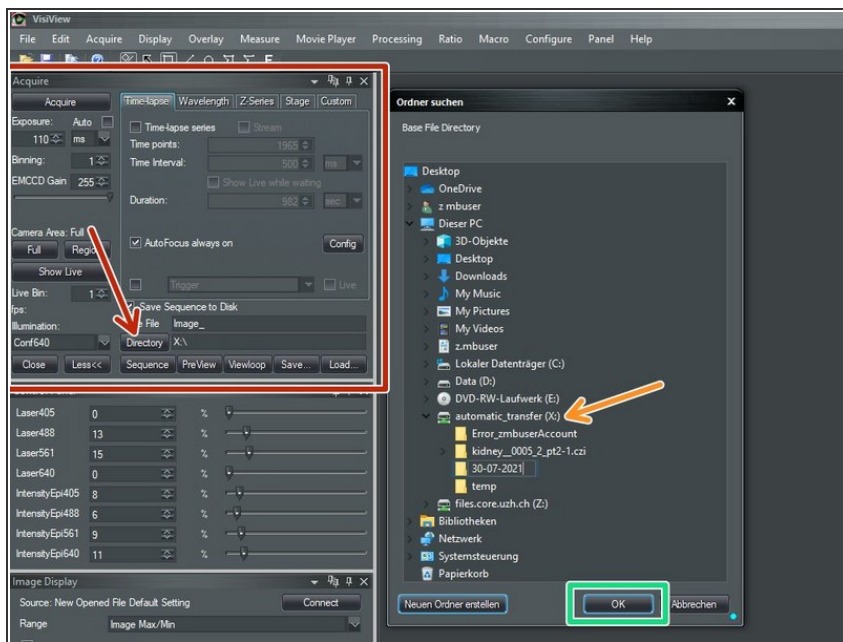
Written By: Jana Döhner



INTRODUCTION

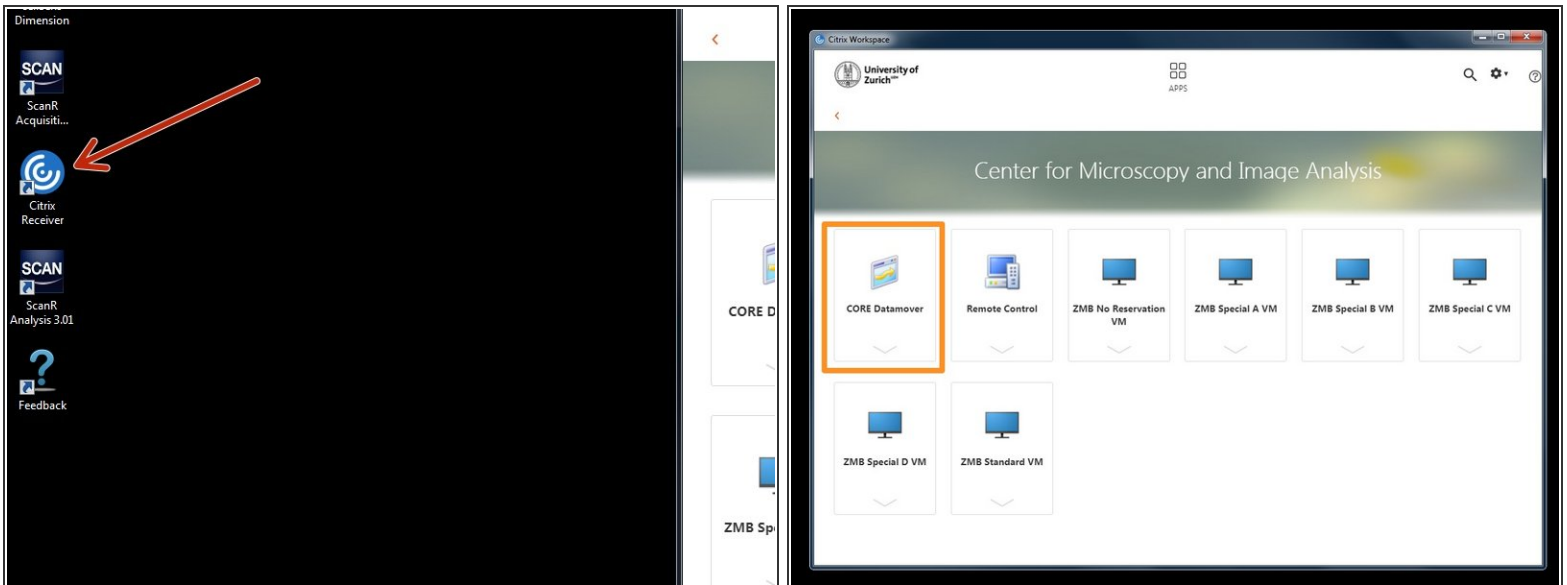
For acquisition of large data sets (e.g. multipositions, timelapses or large volumes) it is recommended that you use the available X: (cache) drive. By doing so acquisition and saving is not limited by the network speed. Transfer of the files can be initiated through our Datamover solution via Citrix.

Step 1 — Define storage location in "VisiView"



- Within the "VisiView" software define where your data should be saved:
 - In the "Acquisition" window click on "**Directory**".
 - Choose "**automatic_transfer (X:)**" and generate a new folder.
 - Finally press "**OK**".

Step 2 — Open "Datamover" for automatic transfer

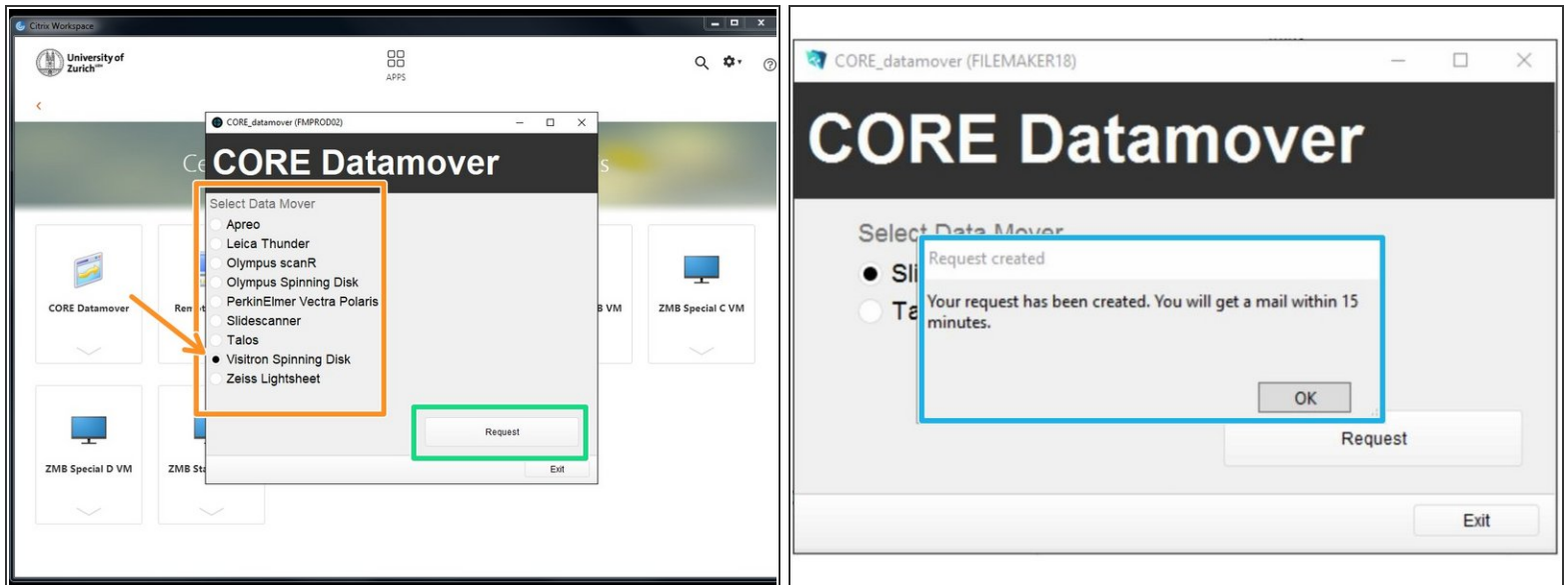


- You can now set up your experiment and acquire your data.

⚠ Once you are done, please remove your sample and clean the microscope appropriately.

- Close the "VisiView" software.
- Open **"Citrix Receiver"** directly on the computer and log on.
 - ☒ Optional - You can also access Citrix from your own computer provided you have installed the Citrix client. Check out [How to section](#) for more info.
- Select the **"CORE Datamover"** application.

Step 3 — Request automatic data transfer



- **Select** desired "**Data Mover**", in this case "Visitron Spinning Disk".
 - Press "**Request**".
 - You will receive a confirmation email within 15 min.
 - Additionally you will receive an email once the transfer has started and another one once it is finished.
 - Finally your data will be available in your CORE "data" folder.
- i** *If you do not receive an email after your request or if you need further support, please contact us at it@zmb.uzh.ch*