

Difference between log-off and disconnect on virtual machines

When using the ZMB image processing virtual machines there are two ways to leave your session: Log-off or disconnect.

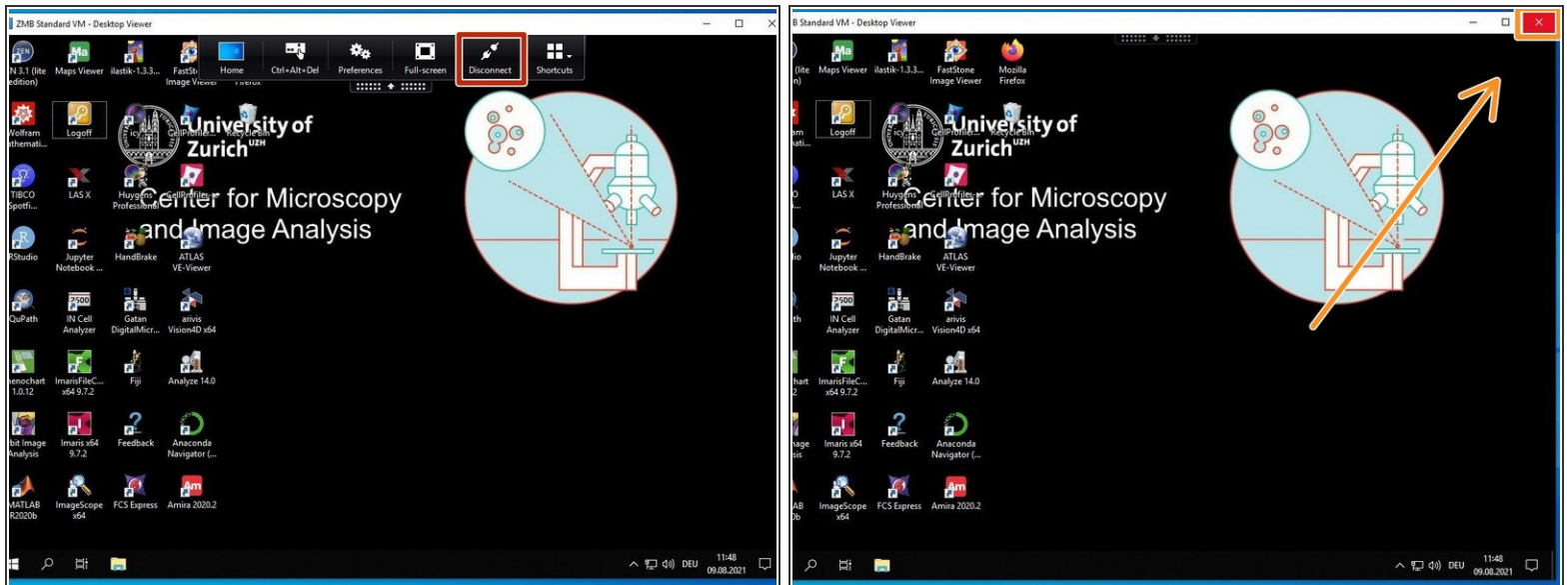
Written By: Jannic Debus



INTRODUCTION

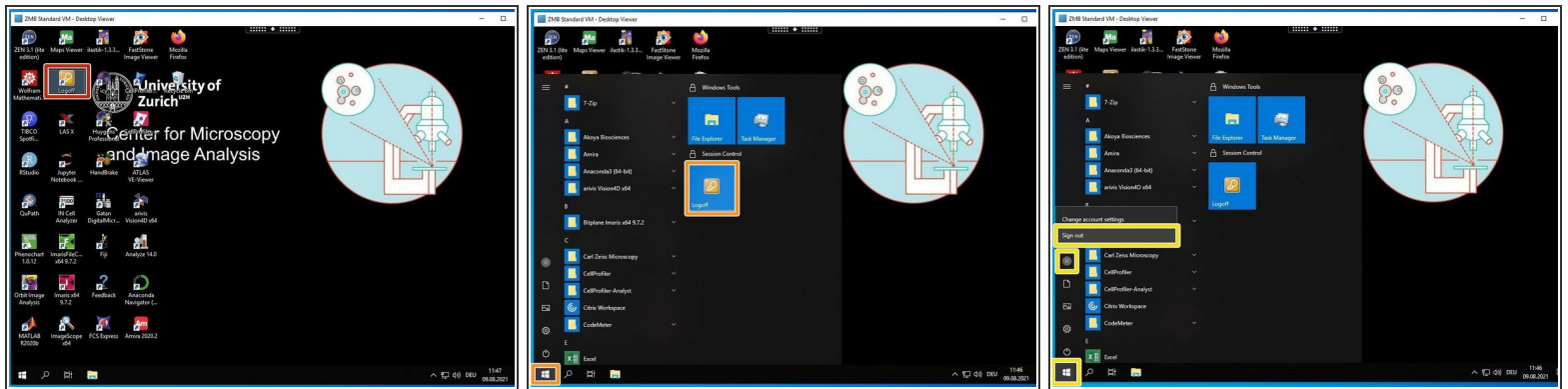
When using the ZMB virtual machines (VMs) there are two ways to leave your session: Log-off or disconnect. This guide explains the difference between the two.


Step 1 — Keep session active: Disconnect



- If you want to keep your VM session running and only disconnect from it, go to the black Citrix menu in top of the window and select "Disconnect".
- The same happens if you close the window with the button in the top right corner
- ⚠ If you disconnect you are still occupying the VM and no one else can start using it.
- 📘 Use the disconnect procedure if you have not finished your work but need to interrupt it. Only do this if you have an active booking.

Step 2 — Terminate session: Log-off



- If you want to terminate your VM session click on the orange Logoff button on the Desktop
- Alternatively there is also an orange Logoff button in the start menu.
- As third option: Click on the Start menu, select the account icon and select "Sign out"
-  By logging off the VM is ready to be used by someone else.