

Imaris Part 1: File conversion and opening files

Imaris requires IMS files as input. Imaris File Converter can be used to convert your files into *.ims so you can visualize them in Imaris.

Written By: Joana Raquel Delgado Martins



INTRODUCTION

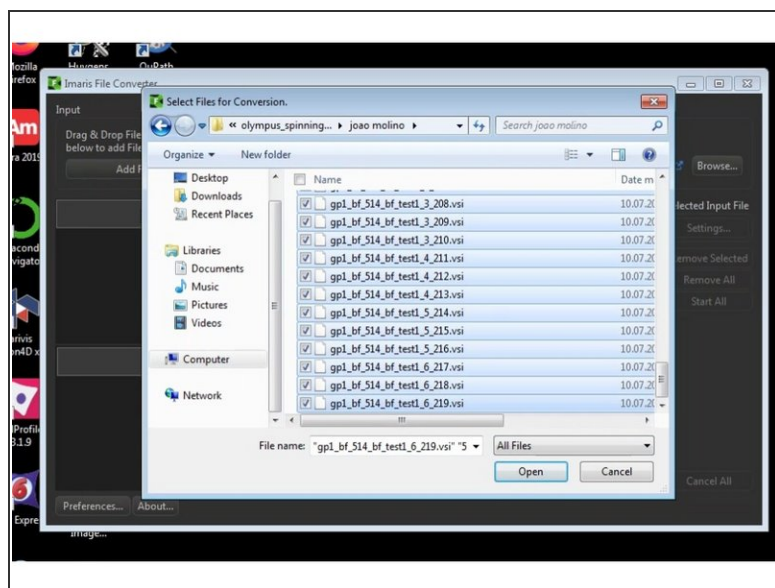
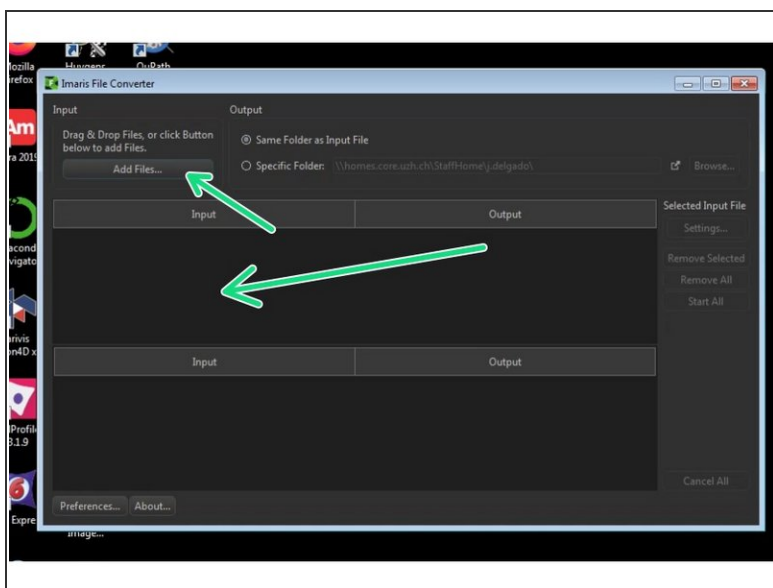
Imaris requires IMS files as input. Imaris File Converter can be used to convert your files into *.ims so you can visualize them in Imaris.

Step 1 — Open Imaris File Converter



- Reserve and open a ZMB image processing virtual machine.
- Open ImarisFileConverter.

Step 2 — Choose files

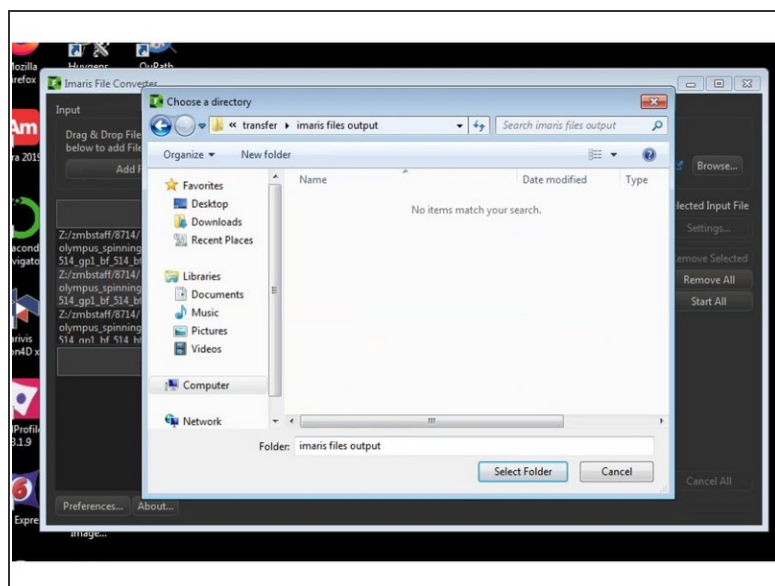
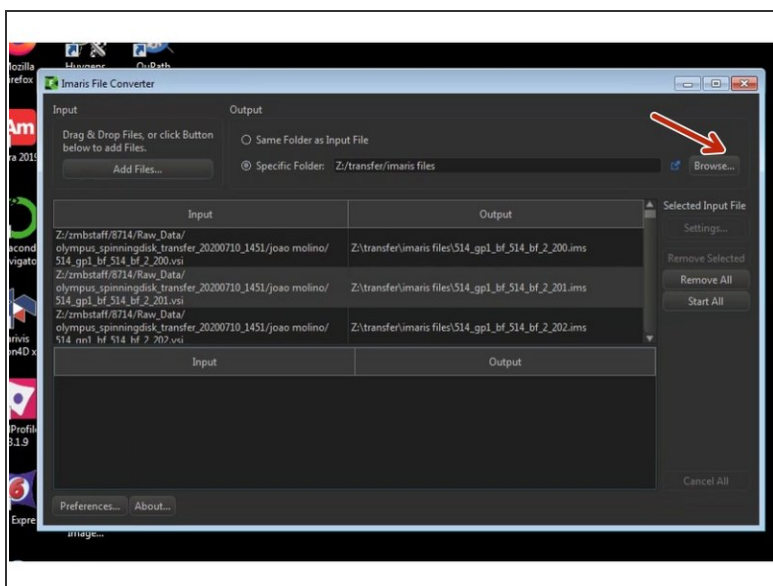


- Either Drag & Drop the files you wish to convert, or click "Add Files..."

Figure 1 displays two screenshots of the Imaris File Converter application. The left screenshot shows the 'Input' tab, where a list of files is displayed with columns for 'Input', 'Output', and 'Voxel Size'. The right screenshot shows the 'Output' tab, where a list of files is displayed with columns for 'Input', 'Output', and 'Voxel Size'. Both screenshots show a 'Download ImarisConverter Bioformats Plugin' button. The right screenshot also includes a 'Voxel sizes are invalid. Some of the images contained in this file have unknown voxel sizes.' warning message and a list of images with their respective voxel sizes.

- Until this bug is fixed please use the workaround of doing the conversion in [Imaris Arena](#).

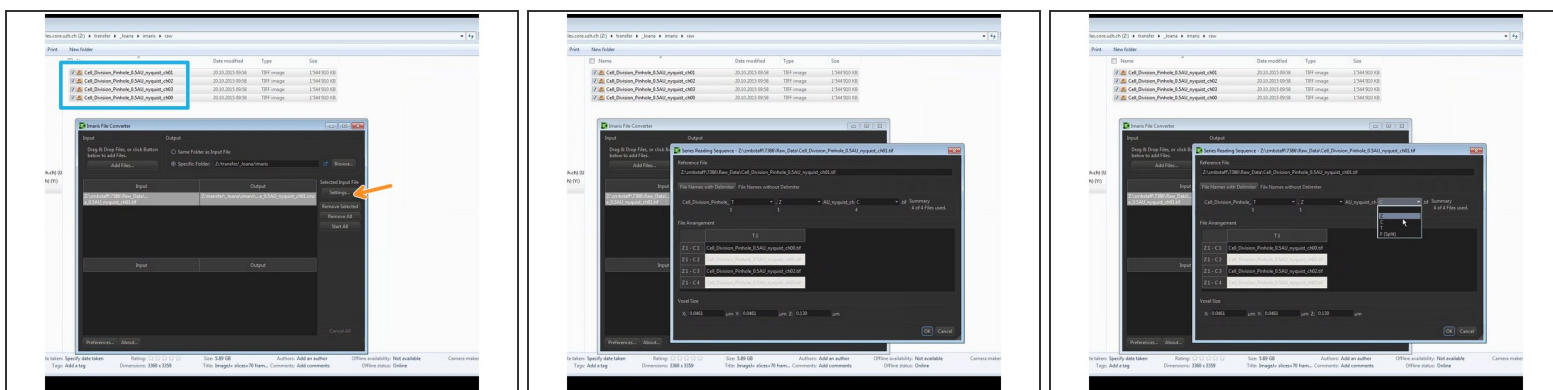
Step 4 — Specify your output folder



i It is recommend that you save your processed files in a different folder than your raw data.

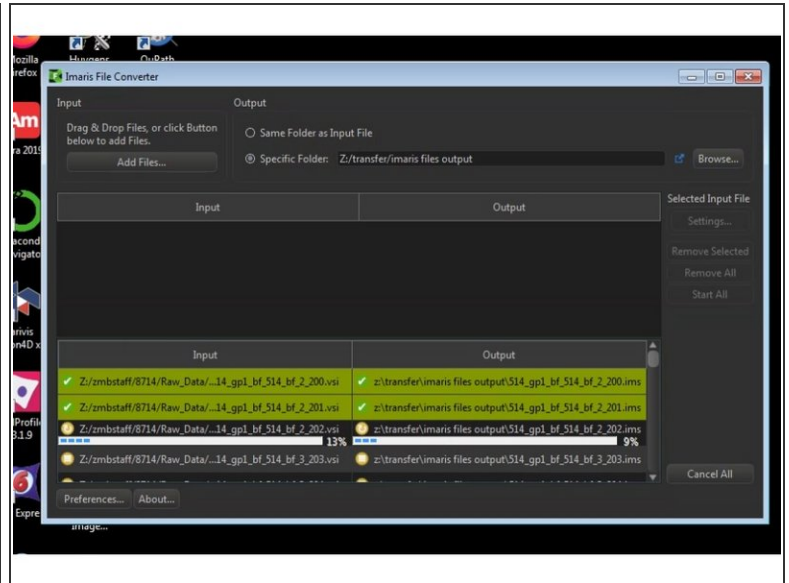
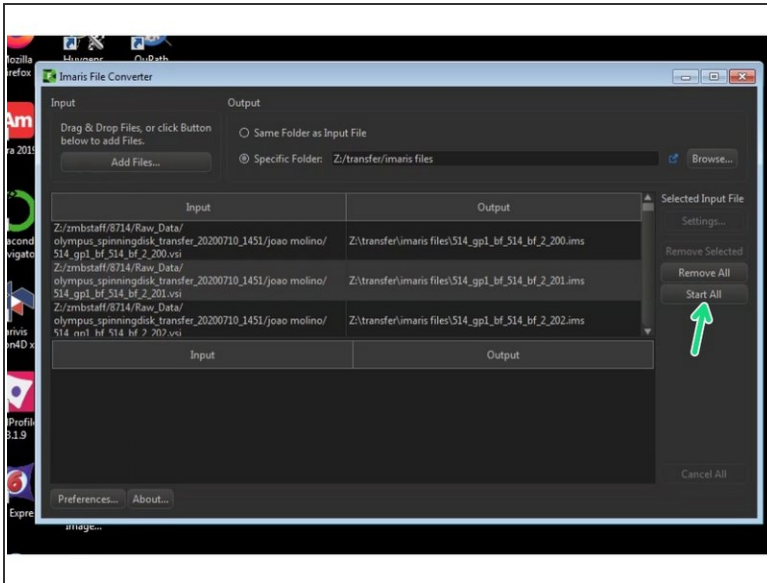
- Click "Specific Folder:".
- Choose the desired folder path.

Step 5 — Dimensionalities and other considerations



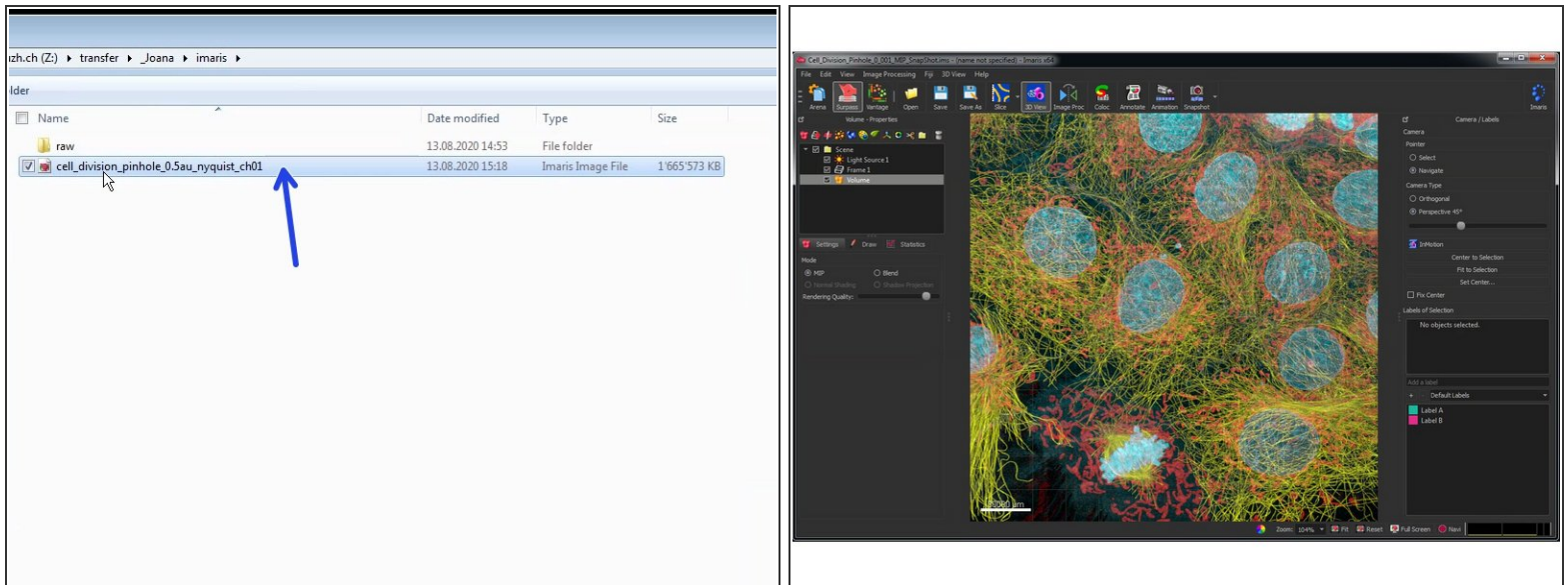
- Multiple files of a series such as 3D stacks, time series and multi channel images should be automatically recognized as a single *.ims file.
- If the dimensions are not properly detected you can select your file and click on "Settings".
- Here you can adjust the dimensions of the image series for conversion.
 - ① In the example each file correspond to a different channel (C). The same principle would apply to different Z planes (Z) or timepoints (T).
 - ① For container files such as .lif (which can contain multiple images/datasets) an individual *.ims file for each image/dataset will be generated.

Step 6 — Start conversion



- You can now start converting your files by pressing "Start All".
- If the conversion is successful you will now see a green mark next to your files.

Step 7 — Open your files



- Open your specified folder and double click to visualize your file.
- Alternatively you can also use the Arena view in IMAris to browse through the different files. Please check the corresponding guide.