

Slidescanner - Zeiss Z1 - PartOptionalC: Import Naming & Scan Profile Assignment From Excel

This guide shows how to generate a comma separated value file, which can be used to assign names and scan profiles for each slide of the slidescanner.

Written By: z mbstaff



names_and_profiles - Editor

Datei Bearbeiten Format Ansicht Hilfe

```
1;1;Sample1_brightfield;BF_5x_default_ZMB.czspf
1;2;Sample_2_Fluo;FL_10x_405_488_594_647_default_ZMB.czspf
1;3;;
1;4;;
2;1;;
2;2;;
2;3;;
2;4;;
3;1;;
3;2;;
3;3;;
3;4;;
4;1;;
4;2;;
4;3;;
4;4;;
5;1;;
5;2;;
- -
```

Step 1 — Definition of names and scan profiles

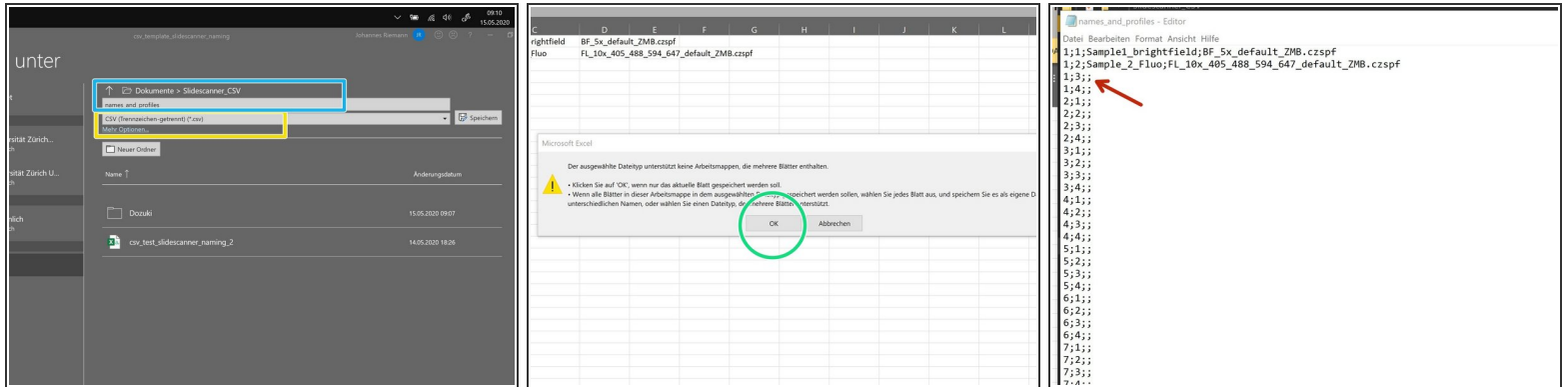
Traynumber	Slidenummer	Name of the Sample	Profile that should be used	Steps needed:
1	1	Sample_1	GATTA-Cells-1c_STED-Probe_660-1c_FL_40x_ZMB.czsp	go to the next table
1	2	Sample_2	GATTA-Cells-1c_STED-Probe_660-1c_FL_40x_ZMB.czsp	type in the name and t
1	3	Sample_3	BF_5x_default_ZMB.czsp	Save the table as a csv
1	4	Sample_4	FL_10x_405_488_594_647_defa	You can open it in not
				If it is semicolon you h
				This is done in ZEN in t

A	B	C	D	E	F	G	H	I	J
1	1	Sample1_brightfield	BF_5x_default_ZMB.czsp						
2	1	Sample_2_Fluo	FL_10x_405_488_594_647_defaul						
3	1	3							
4	1	4							
5	2	1							
6	2	2							
7	4	3							
8	2	4							
9	3	1							
10	3	2							
11	3	3							
12	3	4							
13	4	1							
14	4	2							
15	4	3							
16	4	4							
17	5	1							
18	5	2							
19	5	3							
20	5	4							
21	6	1							
22	6	2							
23	6	3							
24	6	4							
25	7	1							
26	7	2							
27	7	3							
28	7	4							
29	8	1							
30	8	2							
31	8	3							
32	8	4							

- Open the Excel template, that is attached to this guide. (Scroll down to the end of the guide to see attached files)
 - Sheet with explanation
 - Actual template for the Slidescanner
- Headers of the columns that you have in the template.
- Example how the template should look, if there is a name and profile assigned.
- In this example only the first two slides of tray 1 are defined.

⚠ The scan profile has to have the exact same name as in ZEN and they have to be available in your own scan profile folder on the slidescanner.

Step 2 — Saving the sheet.



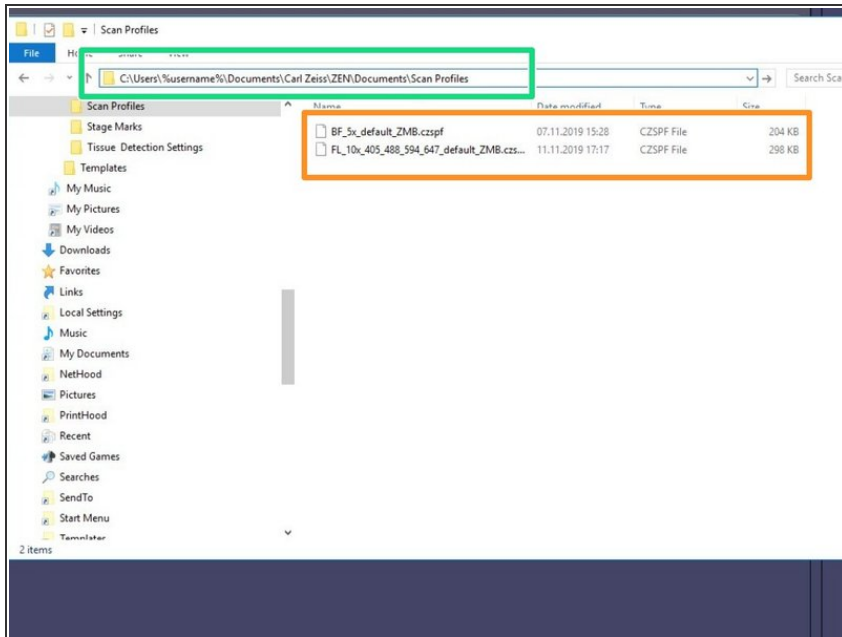
- With your naming sheet active, go to "save as" in Excel.
- Choose a storage location (preferably your home drive, as you will have access from the Slidescanner); Define a name.
- Choose CSV as the saving format.
- Accept the warning, that it will only save the current active sheet.
- Open the file in an editor and check, if Excel chooses Semicolon or coma as a separator (This depends on your Region settings in Windows).

Step 3



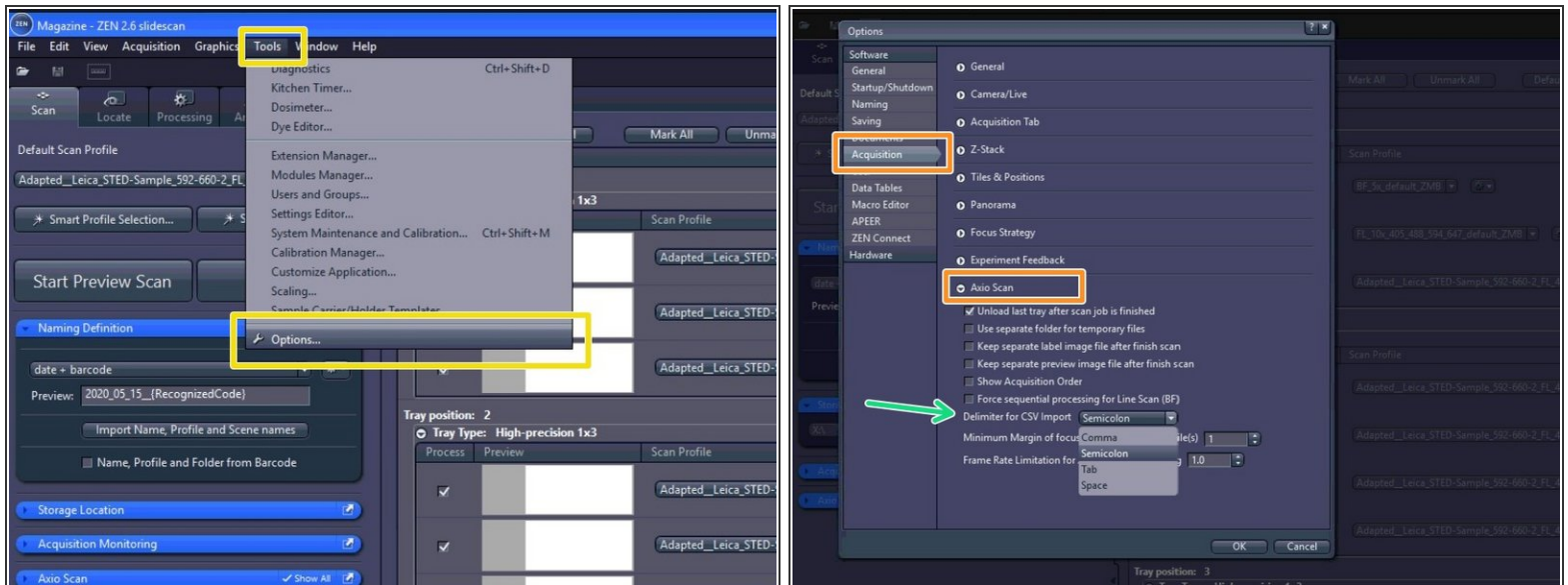
- Go to the Slidescanner, that you booked.
- Follow the Startup Guide: [Slidescanner - Zeiss Z1 - Part1: Start Up](#)
- Load your slides in the exact same order, as you wrote your naming list.
- ① The trays have small numbers from 1 to 4 on it.

Step 4 — Check if the scan profiles are available



- ① This step is only needed, when you use the profile for the first time.
- Make sure your scan profiles, that you assigned in the csv file are in this location on the slidescanner.
- ① You can copy "C:\Users\%username%\Documents\Carl Zeiss\ZEN\Documents\Scan Profiles" into the Windows file explorer to get to the location
- These are the profiles from the example in the Excel sheet.

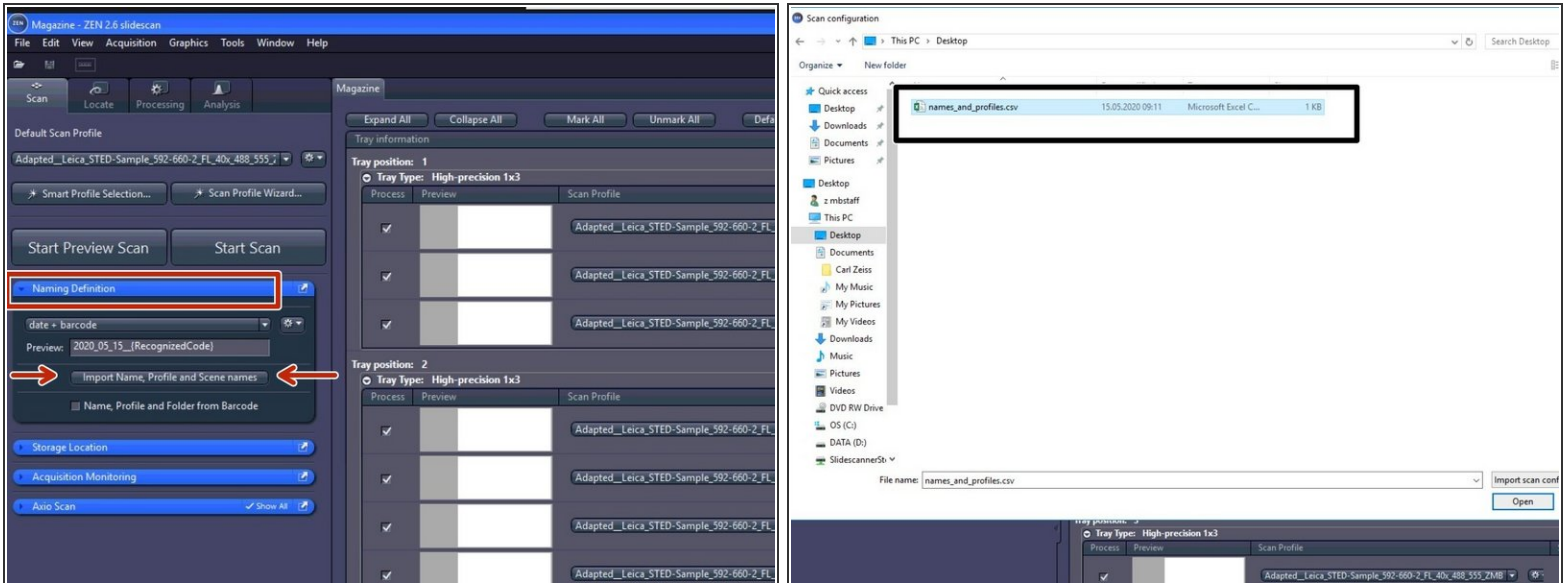
Step 5 — Check which delimiters ZEN uses.



i This step is also only needed the first time ZEN is set up with a csv file.

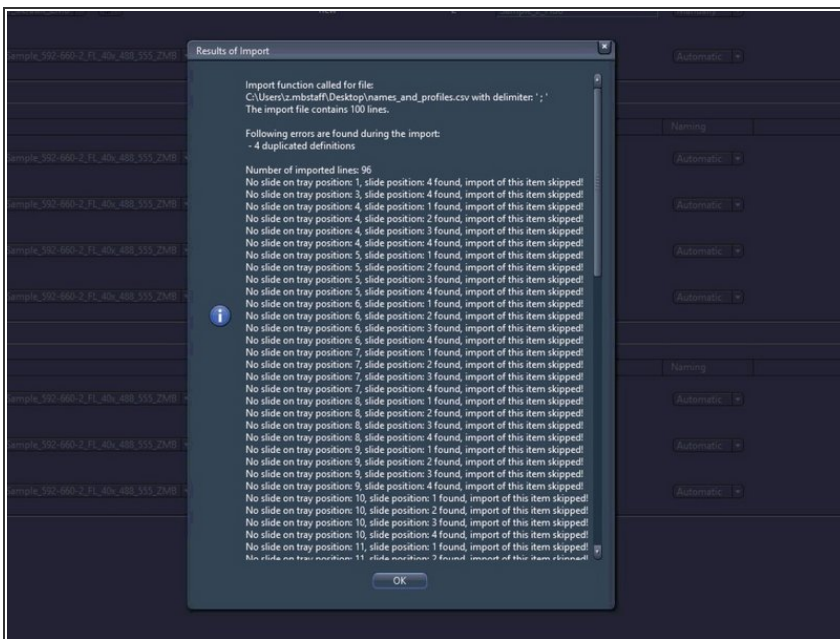
- Go to "Tools" -> "Options"
- Go to "Acquisition" -> "Axio Scan"
- Choose "Semicolon" as "Delimiter for csv import"

Step 6 — Import the csv



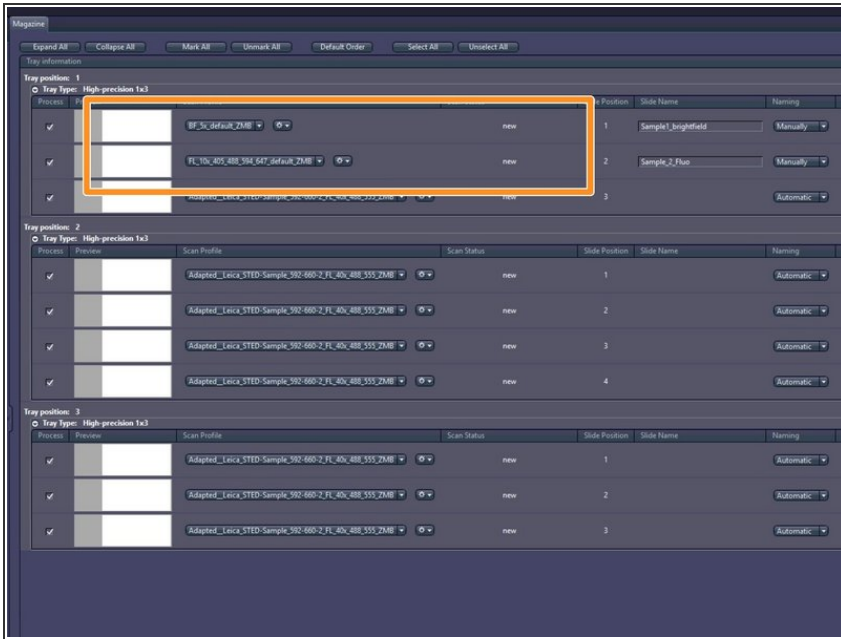
- Click on "Import Name,..." in the "Naming definition" tab of ZEN.
- Choose your csv file.

Step 7



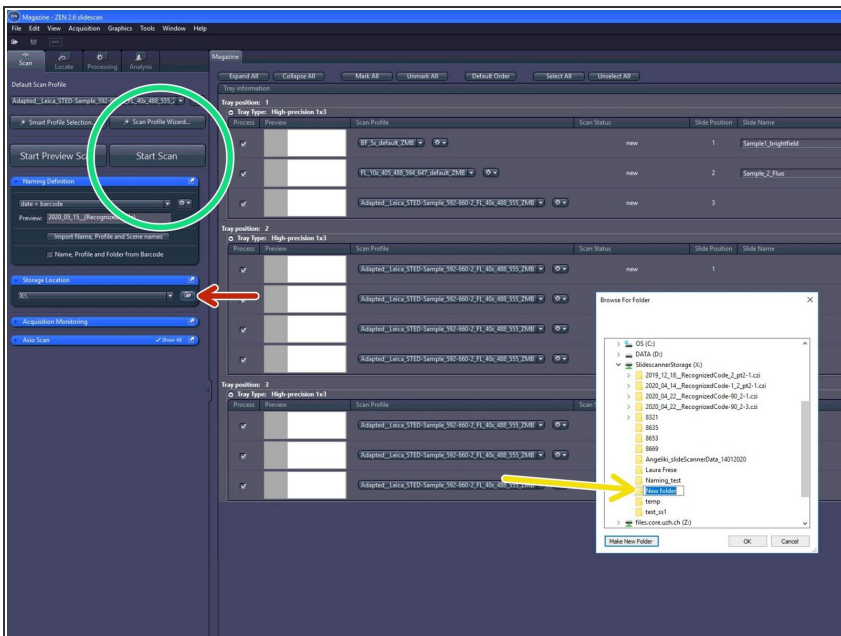
- ① ZEN gives you a feedback about the import of the settings. It skips the positions, where no slide is present.

Step 8



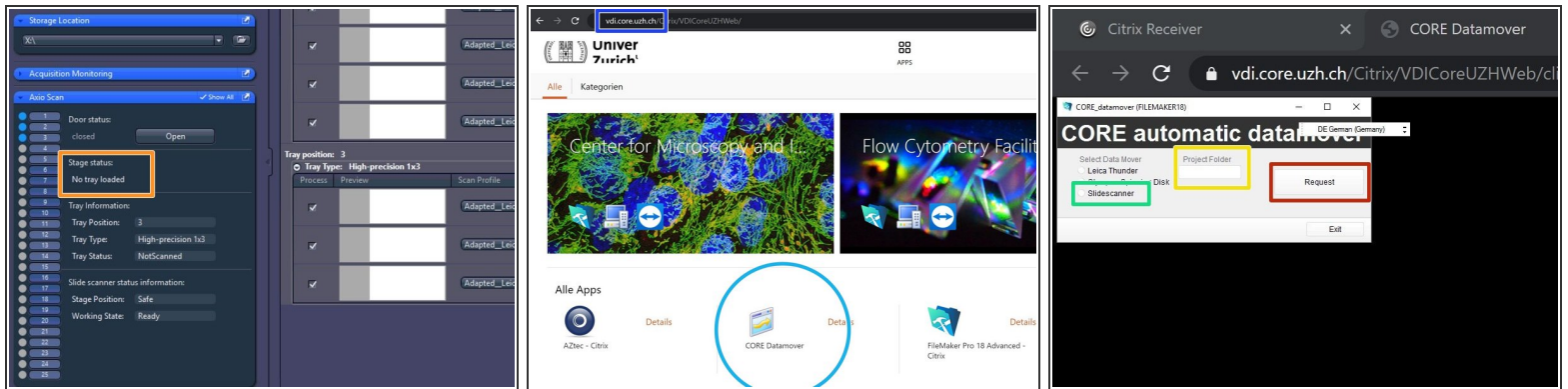
- Check if your scan profiles and names were assigned correctly.
- Positions that are not further defined in the Excel sheet / csv are scanned with default settings. before clicking on "Scan" the slides you did not further define should be excluded by unmarking.


Step 9



- Choose "X:\ " as the storage location.
- Make a new folder and rename it with the experiment number from the Filemaker.
- Click on "**Start Scan**"
- Let the machine run.

Step 10



- Once the acquisition is finished, make sure all the trays are unloaded.
- Then open the Slidescanner door and remove all your slides again. Then close the door, close the ZEN software and sign out your account from the computer.
- Go to Citrix and login with your core account.
- Click on the "CORE Datamover"
- Choose the "Slidescanner"
- Type in the project number of your acquisition
- Click on "Request" to start the data transfer.
-  You will get an Email, when the data transfer is finished.