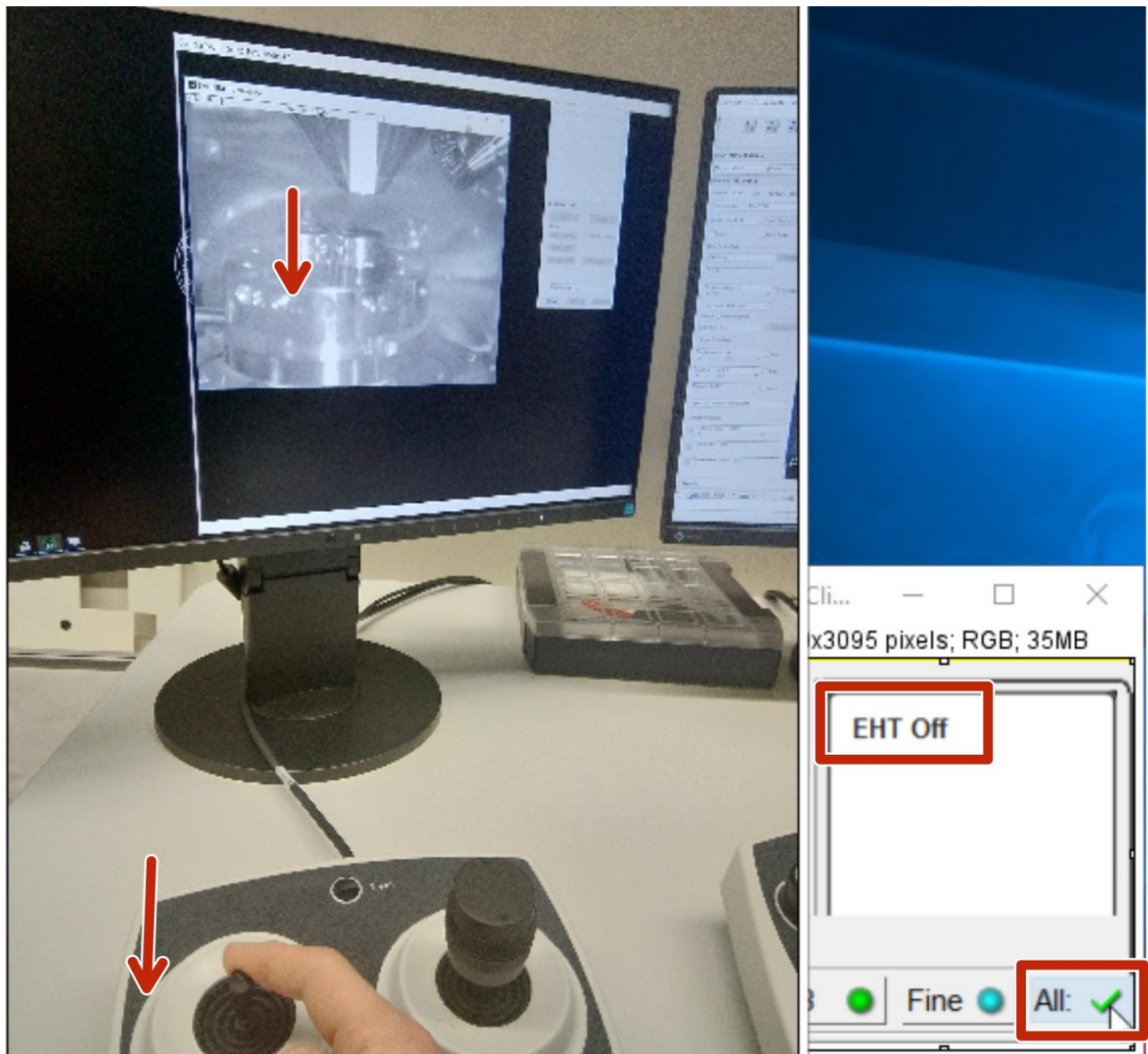


SEM-Gemini 450: Part 4 - Close Session

Brief explanation of how to take out the sample and close the system

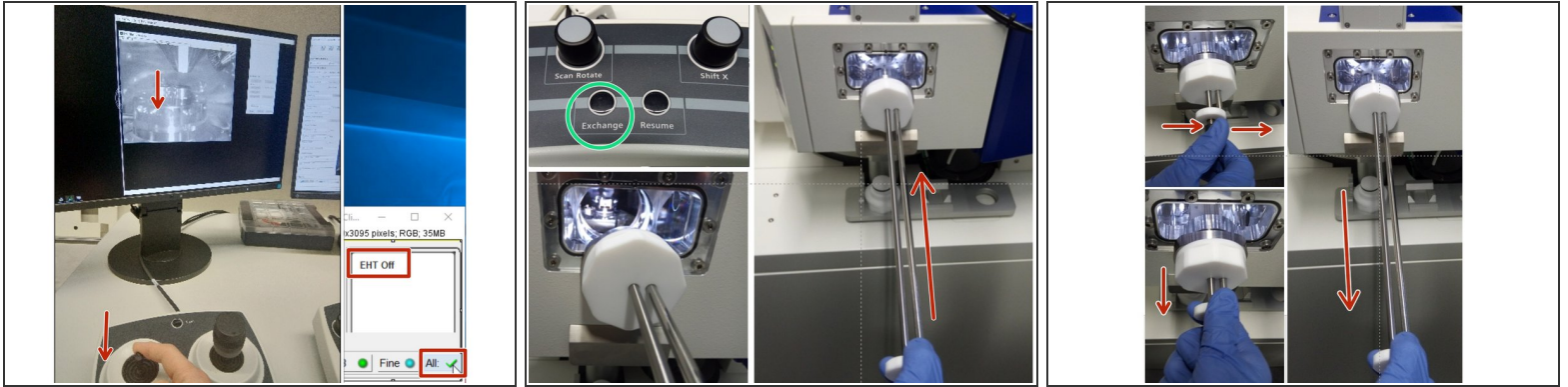
Written By: José Maria Mateos Melero



INTRODUCTION

This guide describes how to close a session at the Zeiss Gemini 450 SEM at the Center for Microscopy and Image Analysis, University of Zurich.

Step 1 — OFF EHT and take out sample

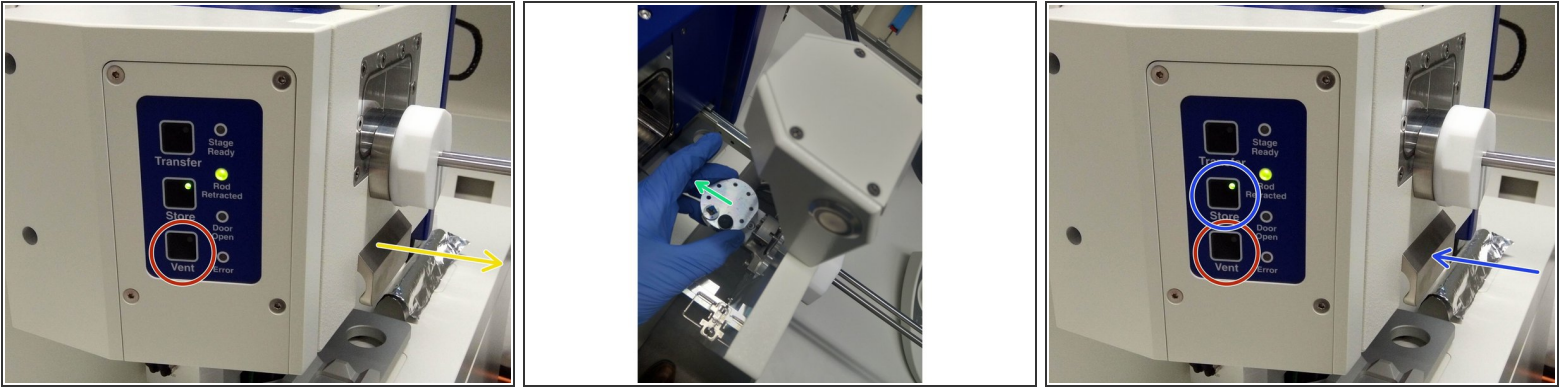


- Select "EHT" and set it to "EHT Off". Use the Z controller to move stage to a low position.
- Press "Exchange" on the control panel. The stage will move the sample holder to the exchange position.
- Wait until the transfer LED on the airlock is on and not flashing anymore. The airlock valve will open.

⚠ Use gloves

- Use the white piece at the far end of the rod to slowly insert and attach it to the holder inside the microscope.
- Screw the rod to the sample holder and retract the rod to the lock position.
- Press "Resume" on the control panel. The airlock valve will close.

Step 2 — Take out sample from Airlock and close session



- Press "Vent" on the Airlock panel
- Open the airlock door
- Unscrew the sample holder and take it out.
- Close the airlock and press "'Store'".
- Close SmartSEM software and log off.