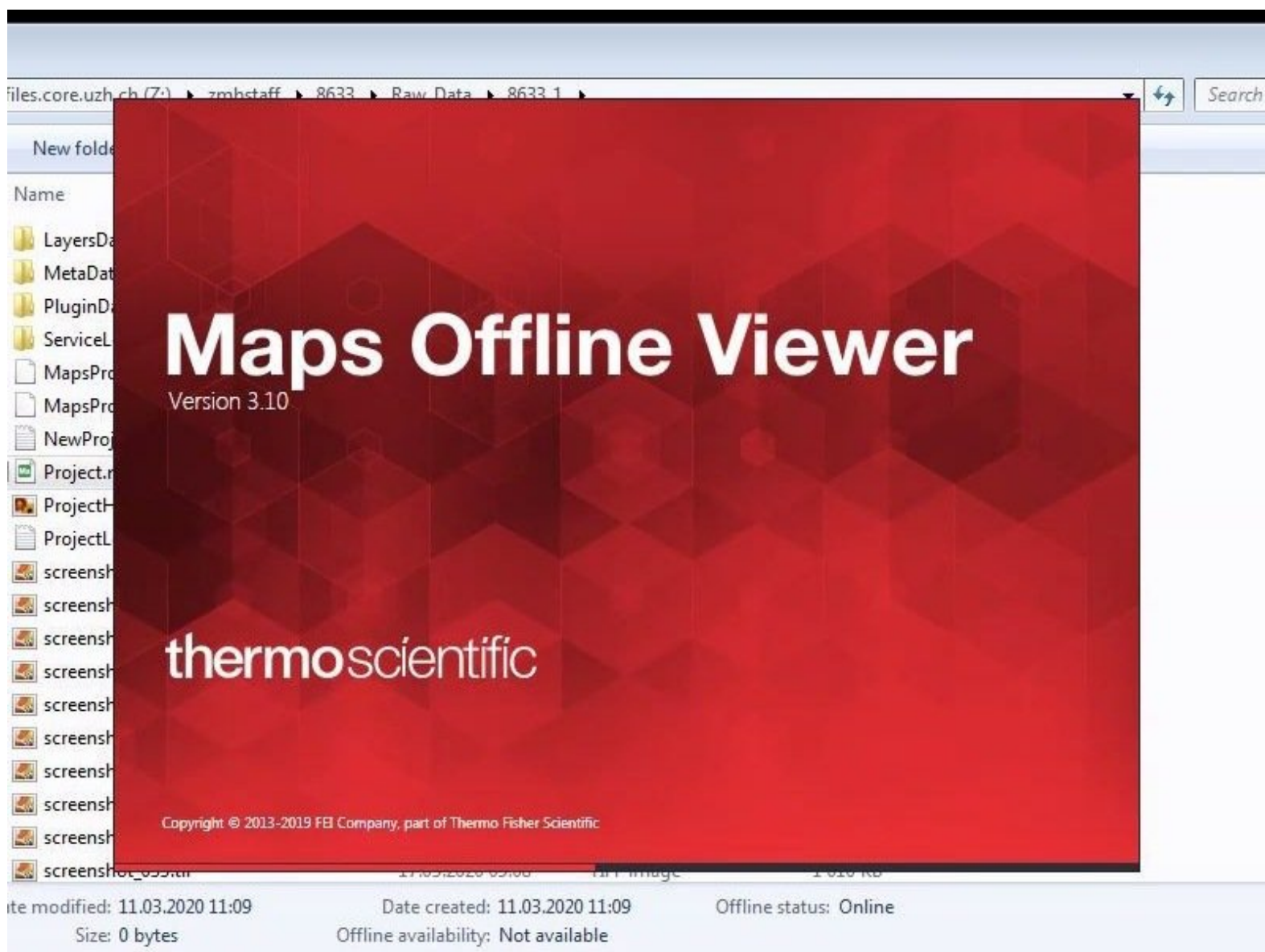


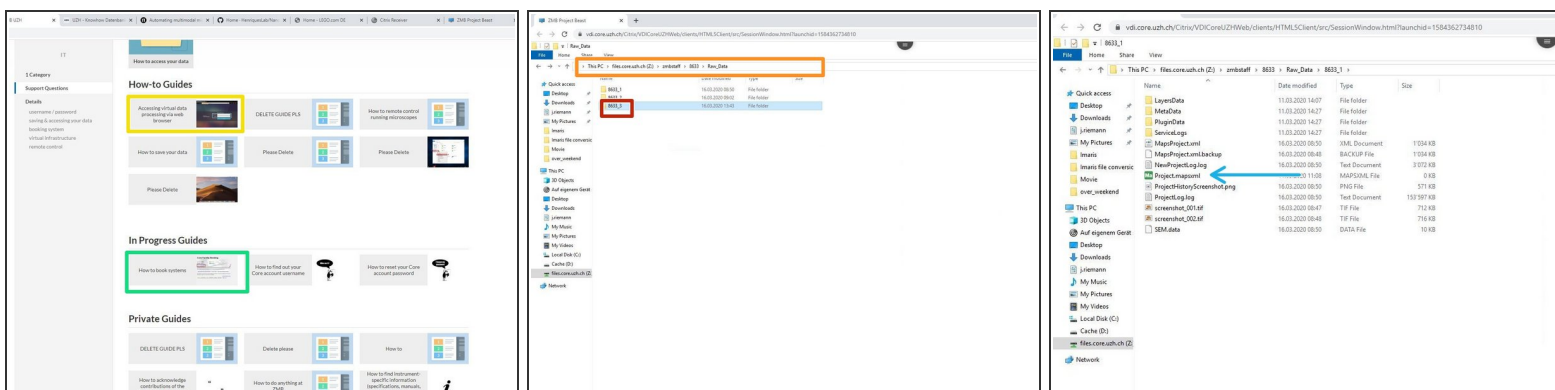
Thermo Fisher MAPS viewer for electron microscopy data


The guide will tell you how to use the MAPS software for viewing data of the Talos 120 transmission electron microscope.

Written By: z mbstaff



Step 1 — Open an image processing VM



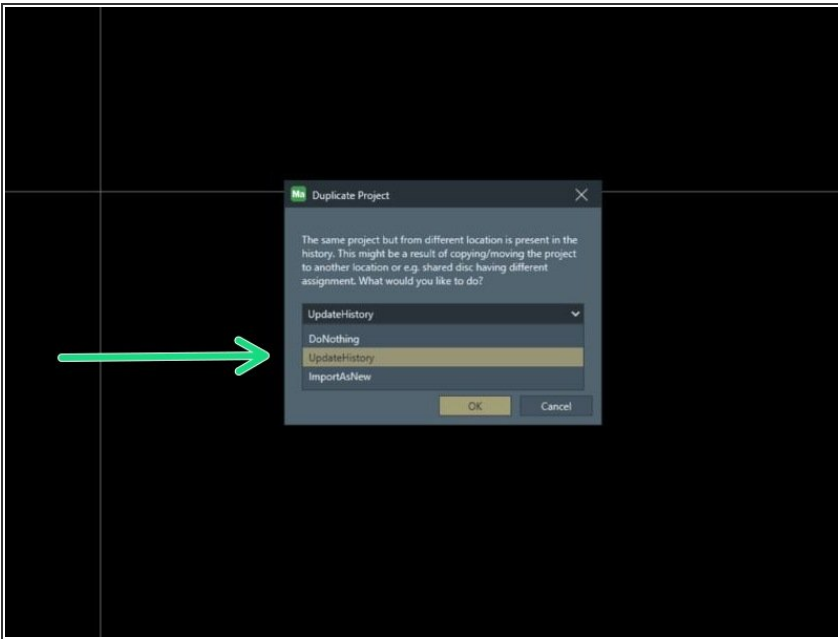
 The Maps Viewer is installed on all VMs

- Book a virtual image processing machine

 [virtual machines](#)

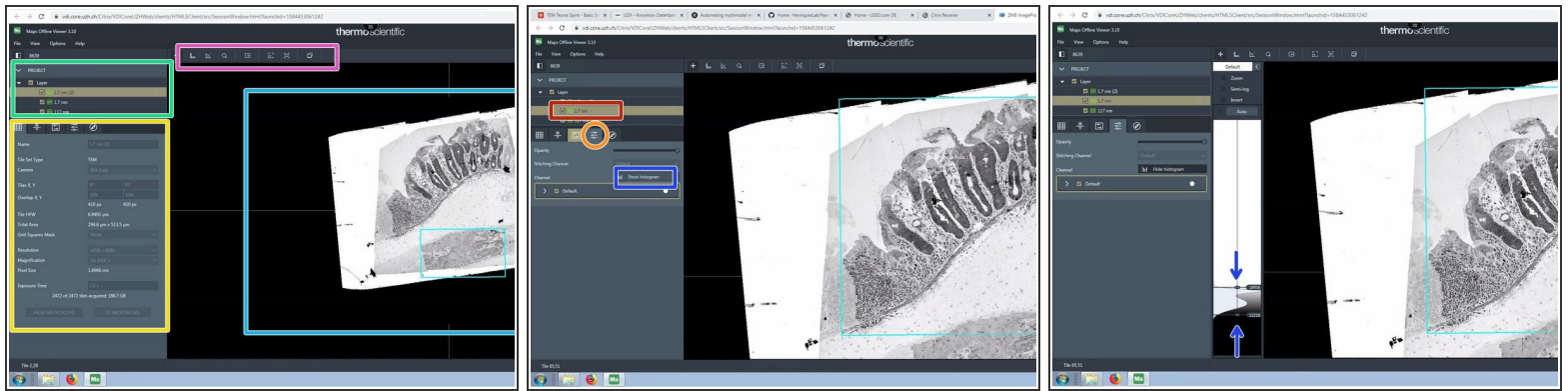
- Open the virtual image processing machine
- Go to your project to the folder Raw_Data
- choose your experiment number and open the folder
- Open the project with a double mouse click on Project.mapsxml

Step 2



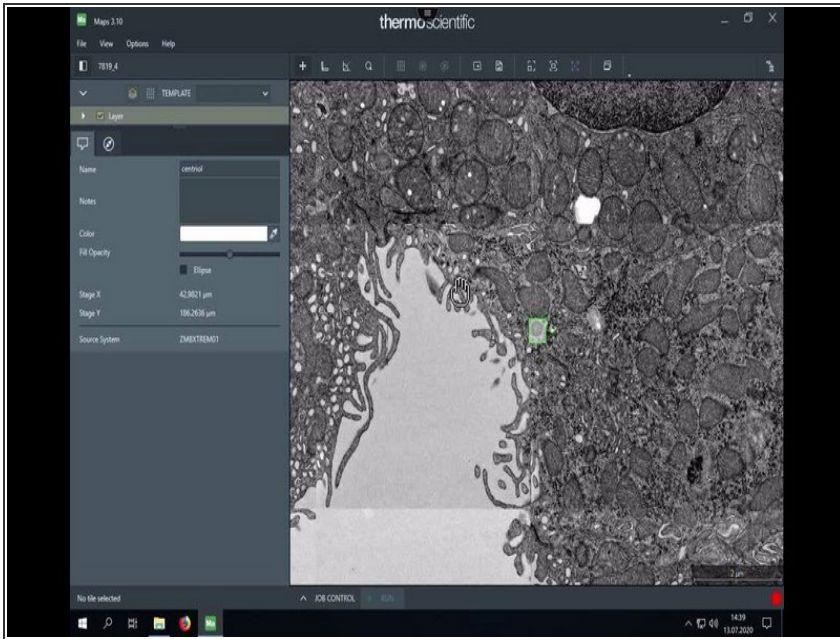
- If this warning appears always click on **"Update History"**

Step 3 — Structure of Maps and histogram adjustment



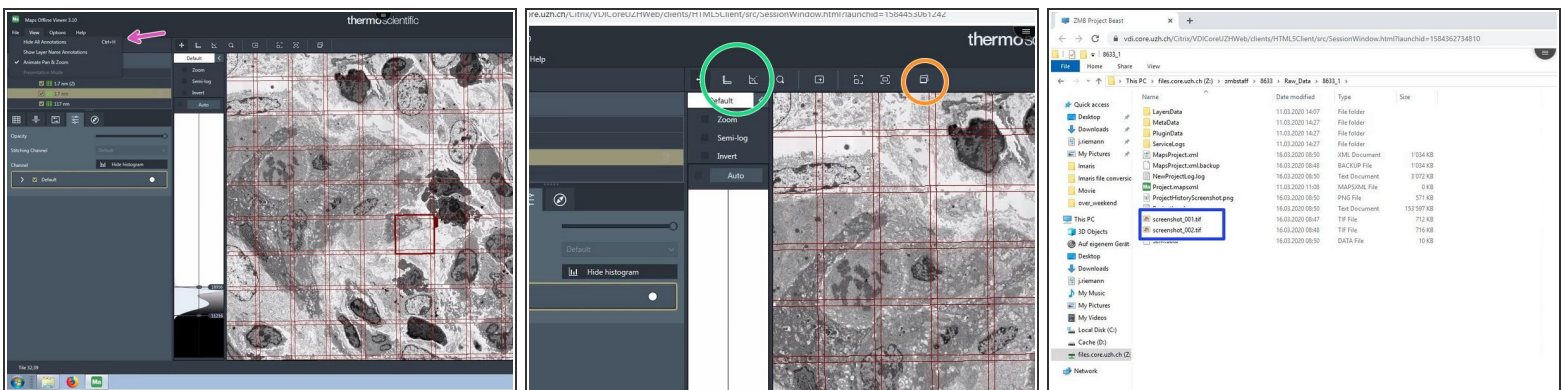
- Data area organized in layers and tilesets. The active objects are highlighted.
- Imaging settings organized in different tabs.
- Tools
- Viewer
- choose the tileset you want to adjust
- Click on the Tab "visualization"
 - "Show histogram"
 - adjust the upper and the lower threshold for the histogram

Step 4 — Navigate with the mouse




- Navigate intuitively in your data
- Annotate regions of interest

Step 5 — hide grid bar and make screenshots

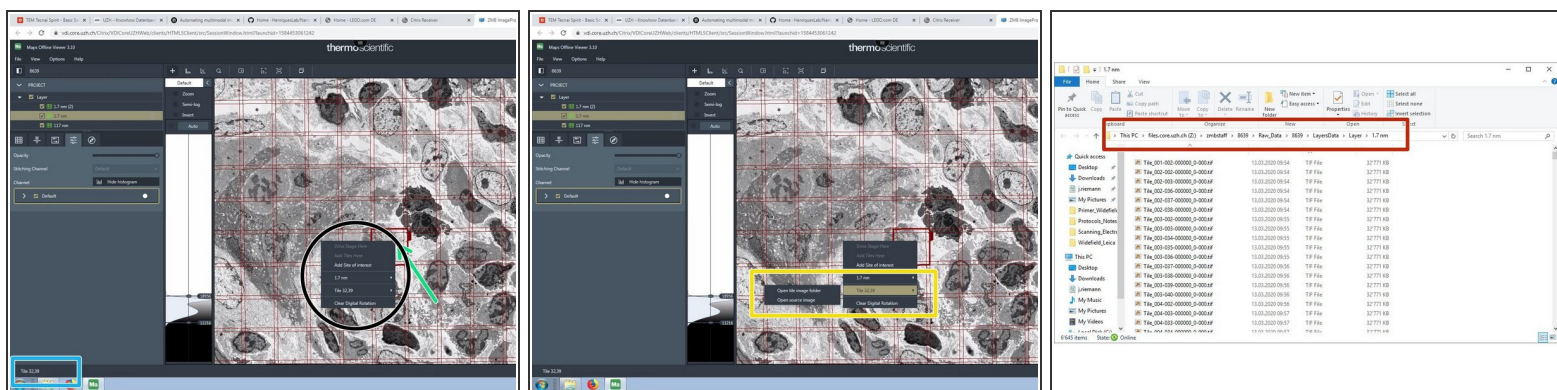


- Go to "View", "hide all annotations" to hide the grid bars and annotations.

 This can also be done with the Keyboard shortcut Ctrl + h

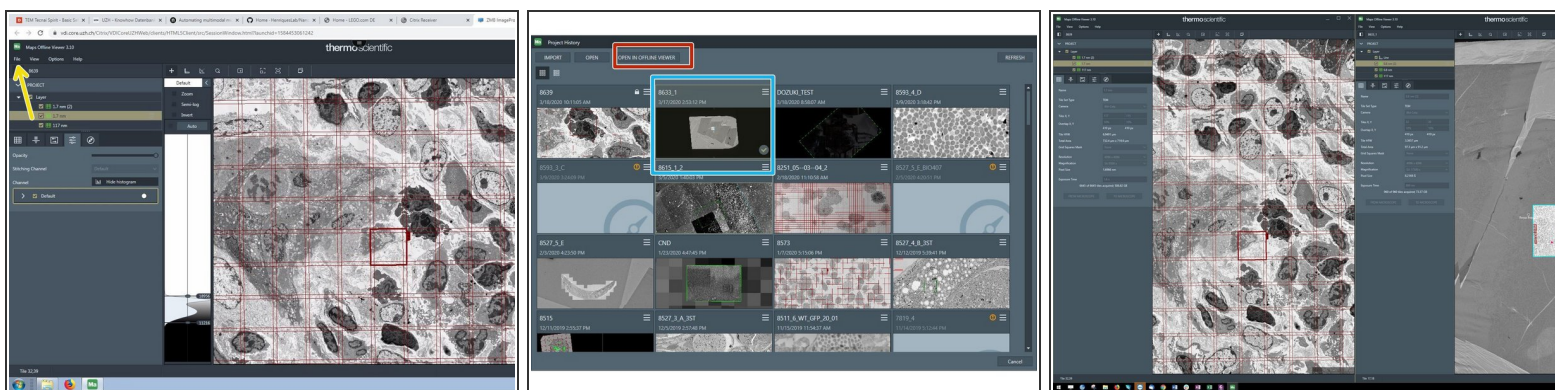
- These tools measure distances and angles
- Use this tool to make screenshots
- The screenshots are saved in the Maps project base folder


Step 6 — How to get to the raw files



- Click on a single tile in a tileset.
- In the lower left corner the tile coordinate/ name is shown.
- Right click on the tile to get more options.
 - Go for the tile and choose the option " open tile image folder, if you want access to the raw data.
 - The file explorer opens the folder with the raw .tif images.

Step 7 — Open other projects at the same time



 Maps can only open projects in a second window, that have already been opened before.

- Go to "*File*" -> "*open*"
- Choose a second project from the list of projects, that you opened before
- Choose *open in offline Viewer*
- Maps opens a second window with the chosen project

Step 8 — How to close Maps



- The program can be closed without saving. Every change is automatically saved.