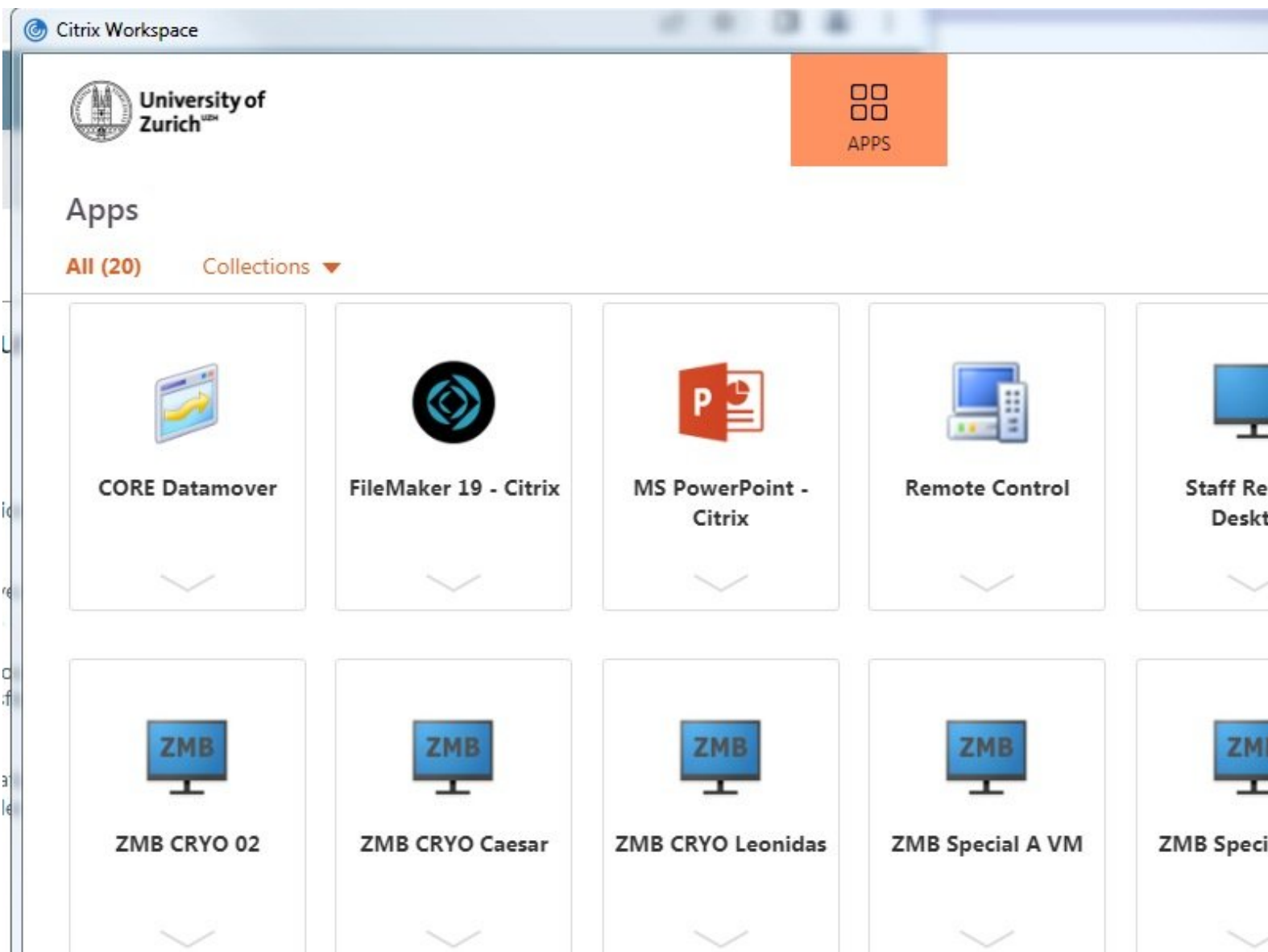


Olympus Spinning Disk and ScanR - Datamover

How to save and transfer data (multipositions, timelapses or large volumes) on the Olympus spinning disk (Y42-H-83) / Olympus ScanR (Y24-F-14) ZMB, UZH.

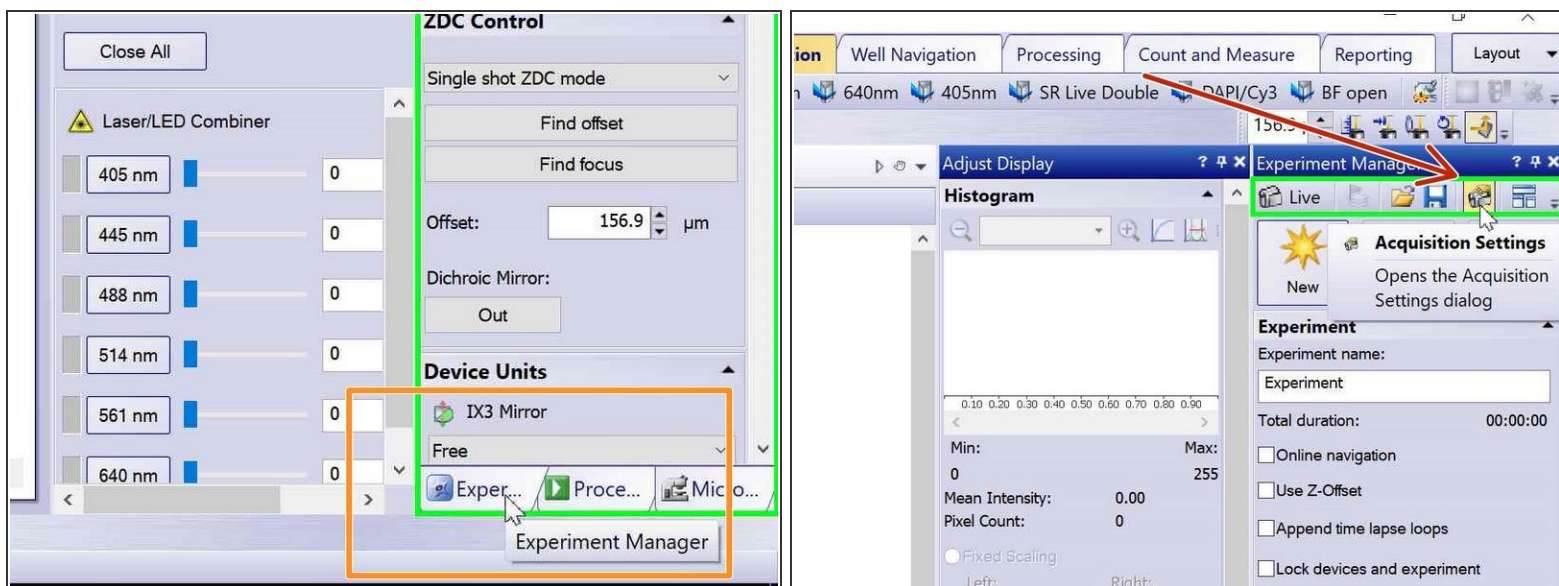
Written By: Joana Raquel Delgado Martins



INTRODUCTION

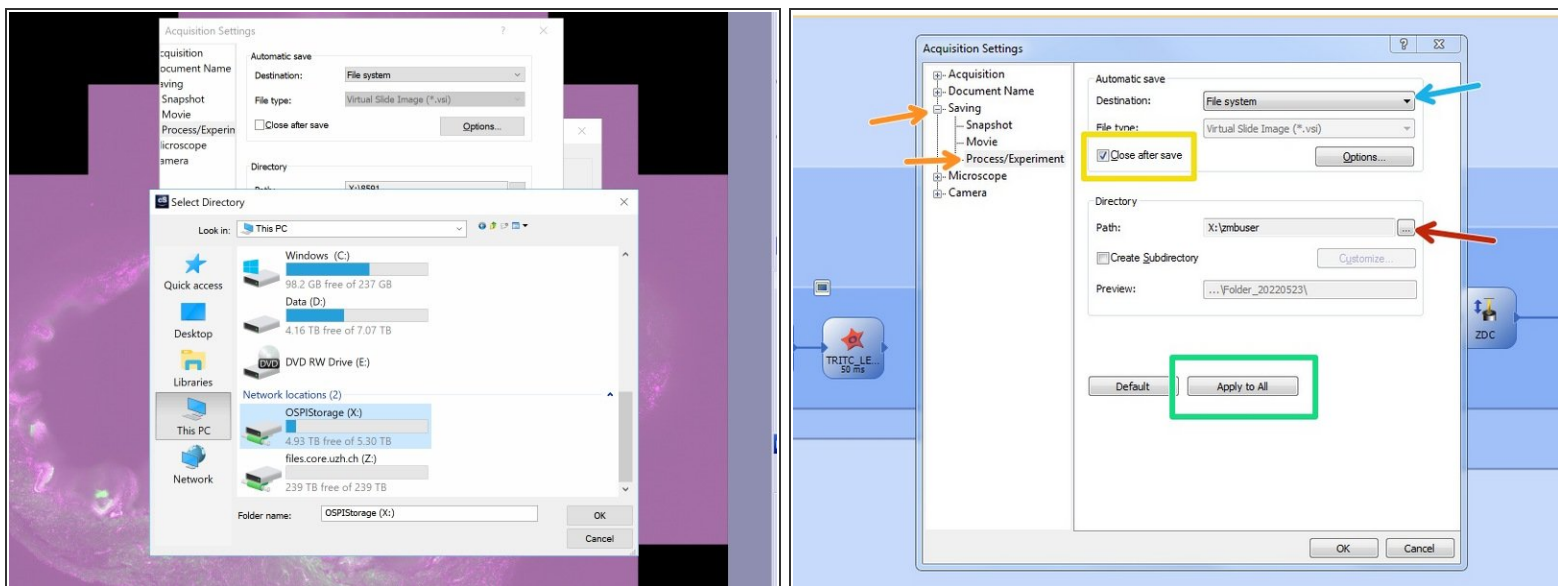
For acquisition of large data sets (e.g. multipositions, timelapses or large volumes) it is recommended that you use the available X: (cache) drive. By doing so acquisition and saving is not limited by the network speed. Transfer of the files can be initiated through our Data Mover solution.

Step 1 — Acquisition settings



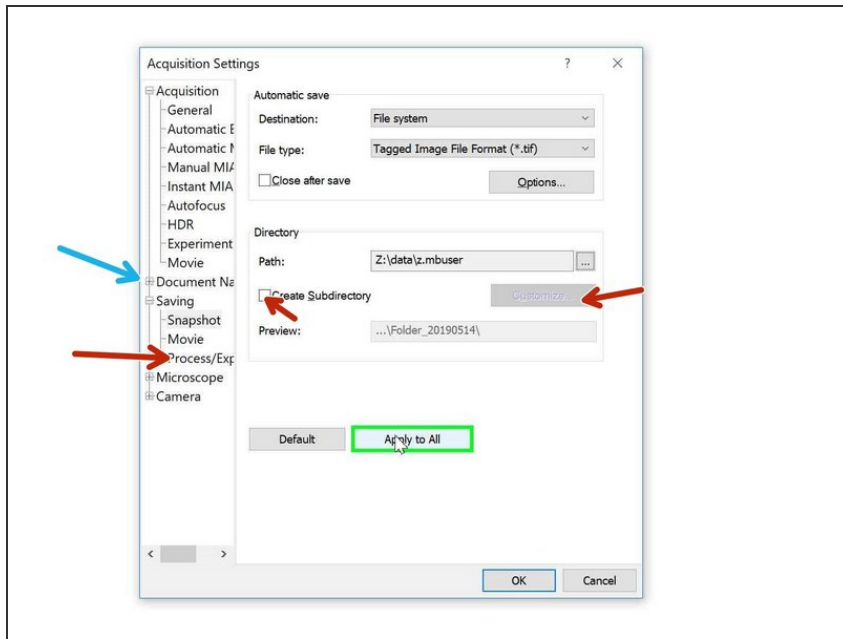
- Open the "Experiment Manager" tab on the bottom right.
- Define where your data will be saved by clicking on the "Acquisition Settings" icon .

Step 2 — Acquisition Settings



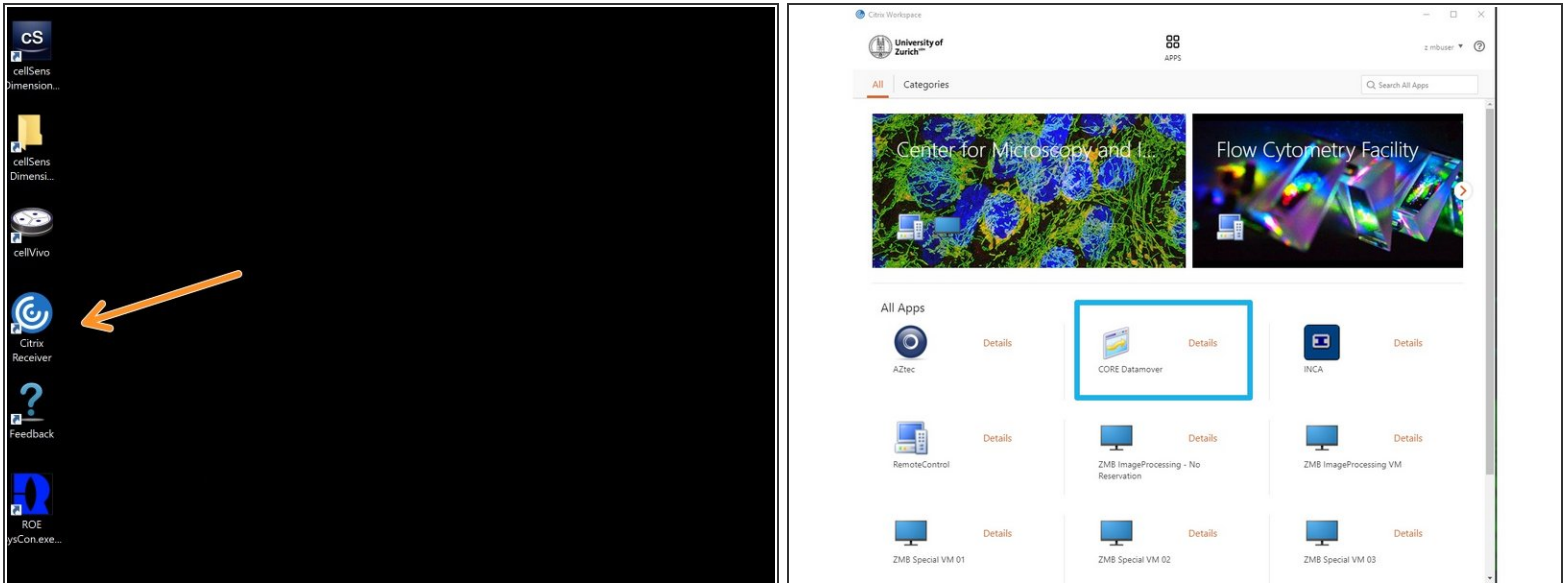
- Go to "Saving">"Process Experiment".
- Choose file system as "Destination".
 - Olympus Spinning disk: choose OSPIStorage (X:) and enter your personal data folder.
 - Olympus ScanR: Choose automatic_transfer (X:)
- Select "Close after save".
- Finally press "Apply to All".

Step 3 — Acquisition settings: naming experiments



- When acquiring multipositions you can custom define the naming of your files/ experiments.
- You can change file naming here.
- Or create subfolders containing each well ID e.g.
- To set up an experiment go to [Olympus Spinning Disk - 2: Multichannel + Z-stack acquisition](#)

Step 4 — Datamover - Transferring your data

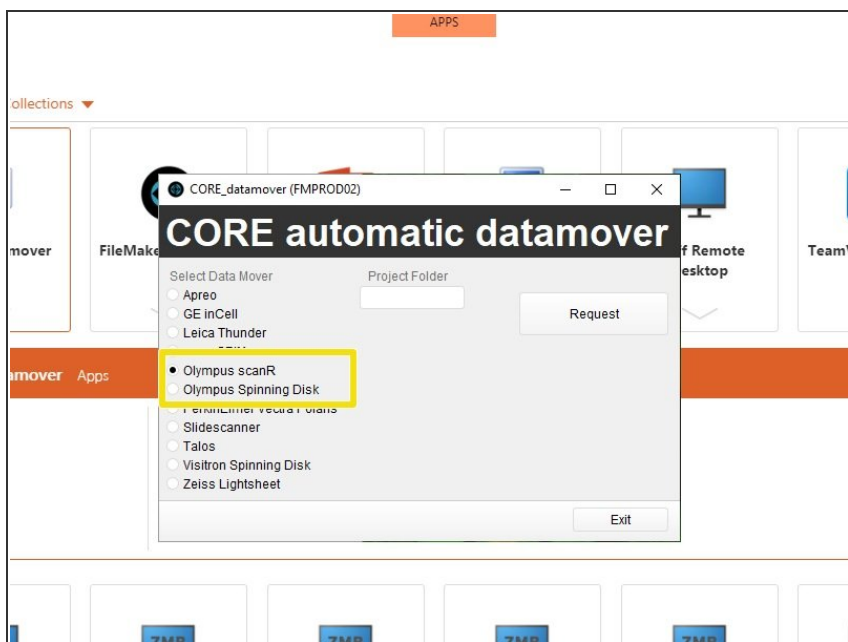


- You can now set up your experiment and acquire your data.

⚠ Once you are done, please remove your sample and clean the microscope appropriately.

- Close the cellSens software.
- Open Citrix workspace directly on the computer.
 - Optional - You can also access Citrix from your own computer provided you have installed the Citrix client). Check out [How to section](#) for more info.
- Select the "CORE Datamover" icon.

Step 5 — Datamover - Transferring your data



- Select the option "Olympus Spinning" disk or "Olympus ScanR" accordingly.
- ❗ You will receive a confirmation email within 15 min.
- ❗ Additionally you will receive an email once the transfer has started and another once it ends.
- ★ Finally your data will be available on you Core date folder.